

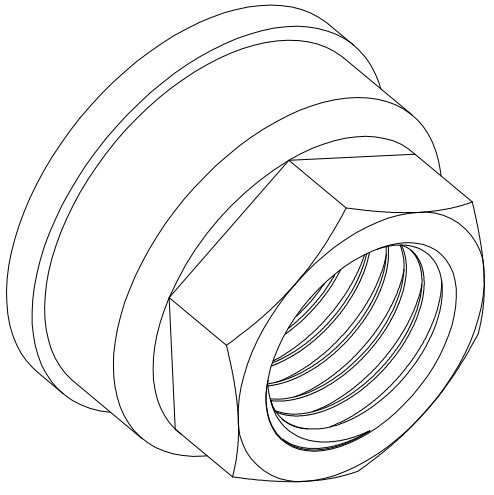
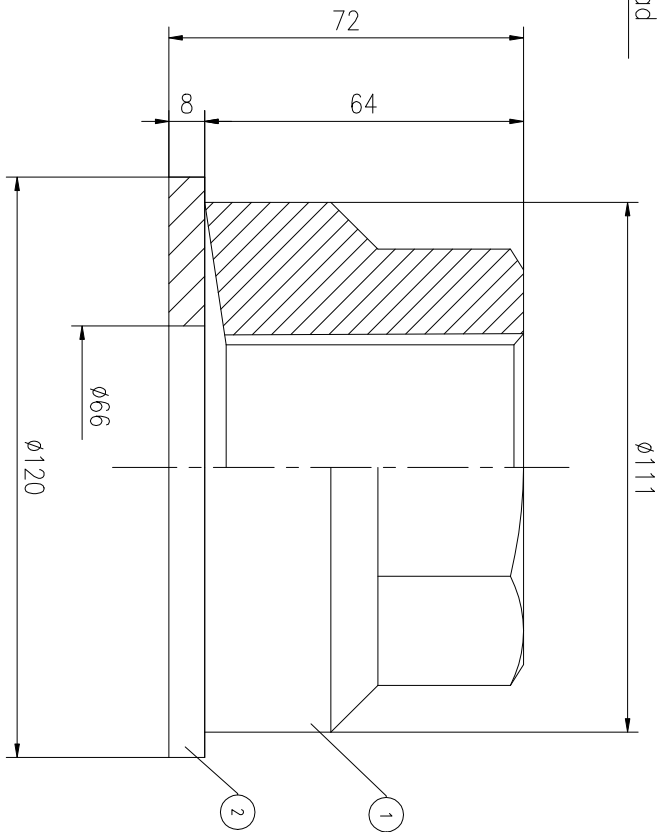
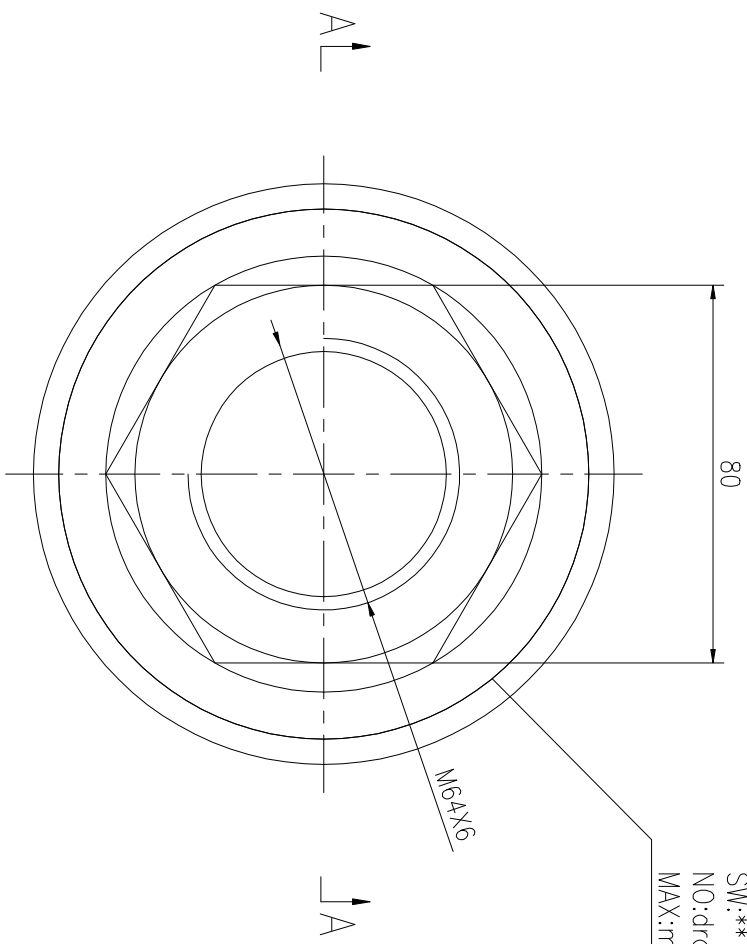
1-6 Ø1	>6-30 Ø2	>30-120 Ø3	>120-400 Ø4	>400-1000 Ø8
--------	----------	------------	-------------	--------------

REV	DESCRIPTION	DWG CHECK	APPR BY	APPR DATE

REVISION HISTORY

A-A

Logo
 PSN:model
 SW:**
 NO:drawing number
 MAX:max preload



PART	DWG NO.	QTY	DESCRIPTION	MATERIAL	WEIGHT(kg)
1	FN6461H-1	1	Nut M6X6	CNMMo	1.85
2	FN6461H-3	1	Gasket 120X66X8	CNMMo	0.50

During on-site installation, please adjust the torque in conjunction with the bolt stretching distance. Without our authorization, the drawings shall not be shared with any third party, and we reserve the right to pursue legal liability against those who disclose the drawings to external parties.

上海康普曼传动机械有限公司
 KPM Power Transmission (Shanghai) Co.,Ltd
 +86 021-61301856
 Liang.Guo@kpmdrive.com.cn

MAX PRELOAD CAPACITY	2100 KN	DESIGNED: DATE: 2025.12.01	FNH-64X6	DWG NO: FN6461H	SHEET: 1:1
LUBRICANT	G-N PLUS	REVIEWED: DATE: 2025.12.01		WEIGHT: 2.35kg	STATE: PRELIMINARY APPROVED
TEMPERATURE RATING	-25 C~250 C	DRAWN: DATE:			