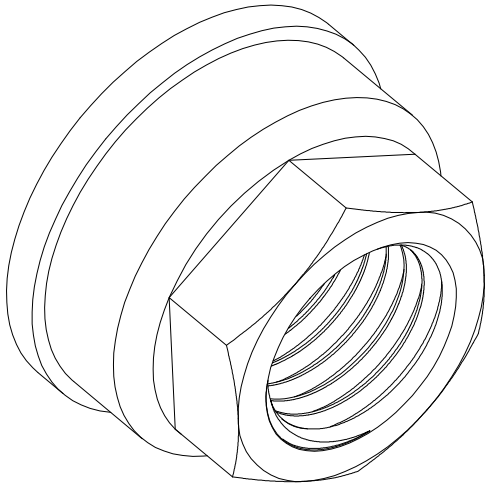
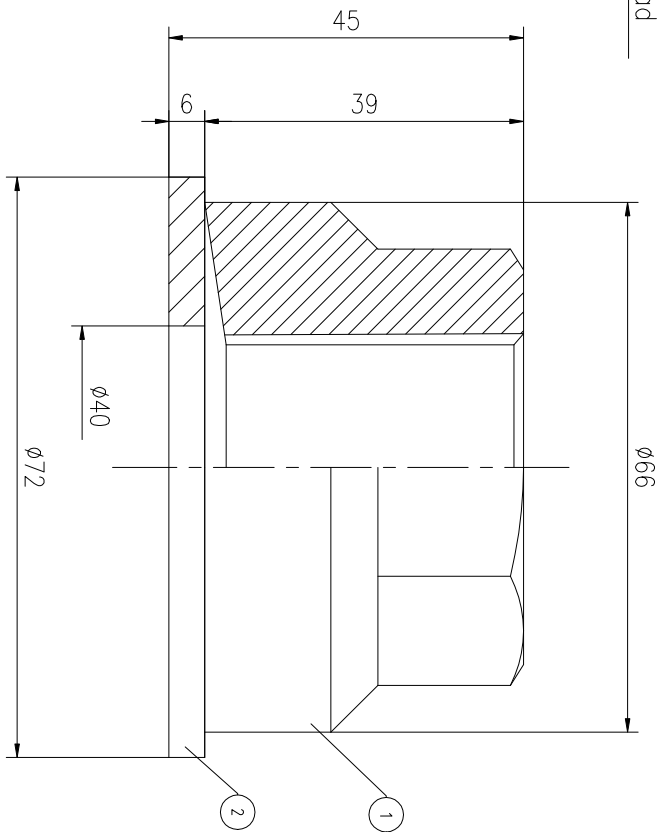
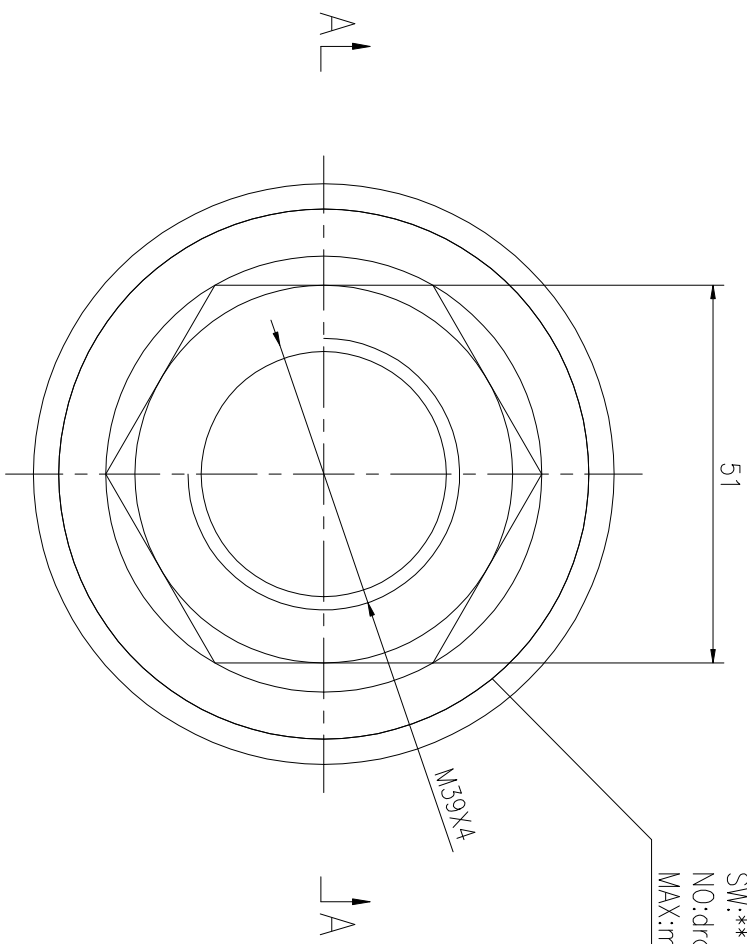


1-6 Ø1	>6-30 Ø2	>30-120 Ø3	>120-400 Ø4	>400-1000 Ø8
--------	----------	------------	-------------	--------------

REVISION HISTORY				
REV	DESCRIPTION	DWG CHECK	APPR BY	APPR DATE

A-A

Logo
 PSN:model
 SW:**
 NO:drawing number
 MAX:max preload



DWG NO. FN3941H SHEET: 1:1

MAX PRELOAD CAPACITY	760 KN
LUBRICANT	G-N PLUS
TEMPERATURE RATING	-25 C~250 C

PARTS LIST		PART	DWG NO.	QTY	DESCRIPTION	MATERIAL	WEIGHT(kg)
1	FN3941H-1	1	Nut M39X4	CNMMo	0.47		
2	FN3941H-3	1	Gasket 72X40X6	CNNMo	0.13		

During on-site installation, please adjust the torque in conjunction with the bolt stretching distance. Without our authorization, the drawings shall not be shared with any third party, and we reserve the right to pursue legal liability against those who disclose the drawings to external parties.

上海康普曼传动机械有限公司
 KPM Power Transmission (Shanghai) Co.,Ltd
 +86 021-61301856
 Liang.Guo@kpmdrive.com.cn

DESIGNED: DATE: 2025.12.01	FNH-39X4	DWG NO: FN3941H	SHEET: 1:1
REVIEWED: DATE: 2025.12.01			
DRAWN: DATE:	PRELIMINARY APPROVED	WEIGHT: 0.6kg	STATE: