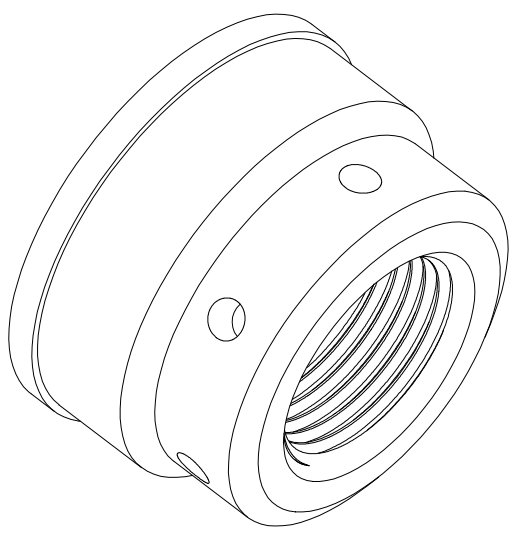
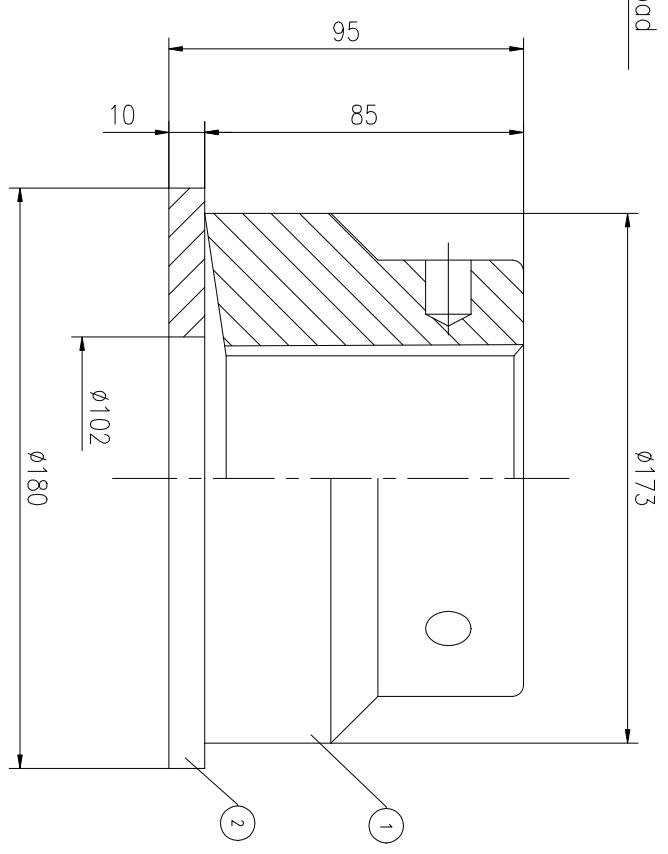
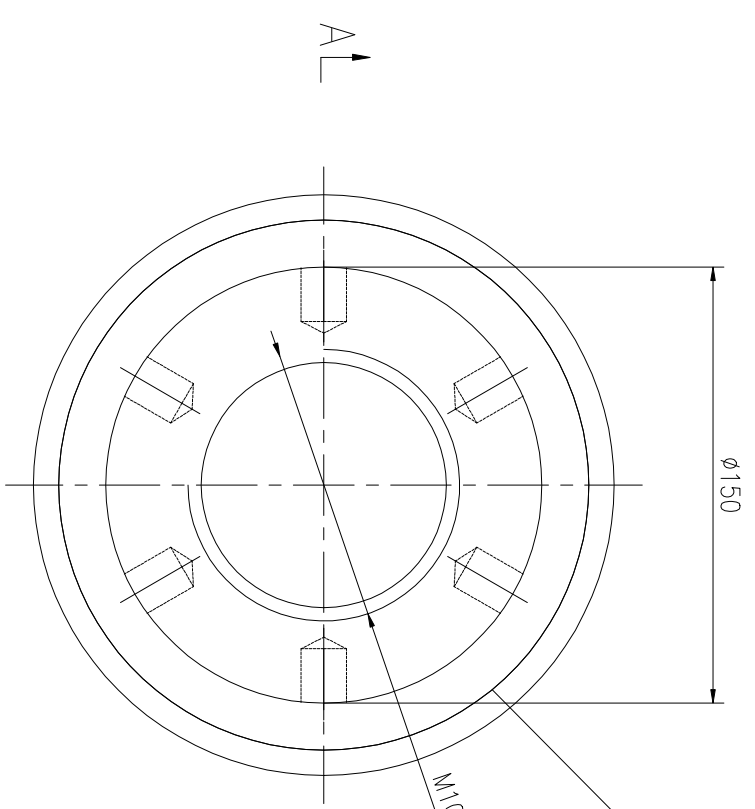


| REV | DESCRIPTION | DWG CHECK | APPR BY | APPR DATE |
|-----|-------------|-----------|---------|-----------|
| | | | | |

REVISION HISTORY

A-A

Logo
 PSN:model
 SW:**
 NO:drawing number
 MAX:max preload



| | |
|----------------------|-------------|
| MAX PRELOAD CAPACITY | 3380KN |
| LUBRICANT | G-N PLUS |
| TEMPERATURE RATING | -25 C~250 C |

| | | | |
|----------------------------|-----------|------------------|------------|
| DESIGNED: DATE: 2025.12.01 | FNM-100X6 | DWG NO: FN10061M | SHEET: 1:1 |
| REVIEWED: DATE: 2025.12.01 | | | |
| DRAWN: DATE: | | | |

上海康普曼传动机械有限公司
 KPM Power Transmission (Shanghai) Co.,Ltd
 +86 021-61301856
 Liang.Guo@kpmdrive.com.cn

| PART | DWG NO. | QTY | DESCRIPTION | MATERIAL | WEIGHT(kg) |
|------|------------|-----|-------------------|----------|------------|
| 1 | FN10061M-1 | 1 | Nut M100X6 | CNMMo | 8.34 |
| 2 | FN10061M-3 | 1 | Gasket 180X102X10 | CNMMo | 1.36 |

During on-site installation, please adjust the torque in conjunction with the bolt stretching distance. Without our authorization, the drawings shall not be shared with any third party, and we reserve the right to pursue legal liability against those who disclose the drawings to external parties.

PARTS LIST

WEIGHT: 9.7kg
 STATE: PRELIMINARY APPROVED