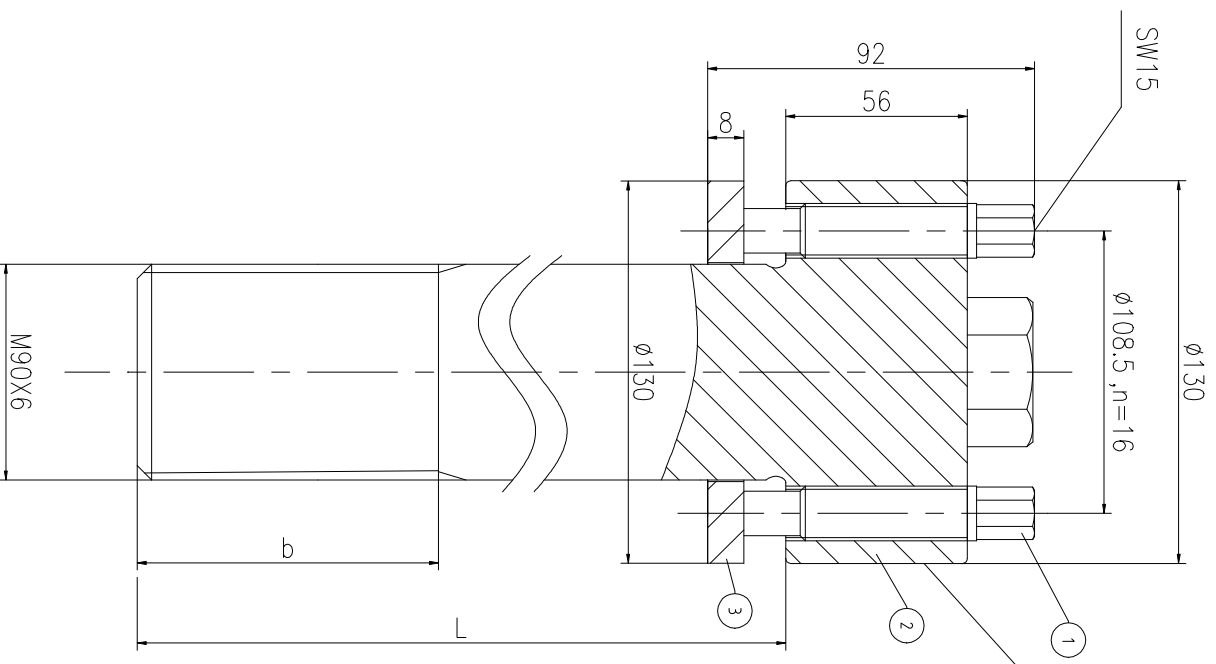
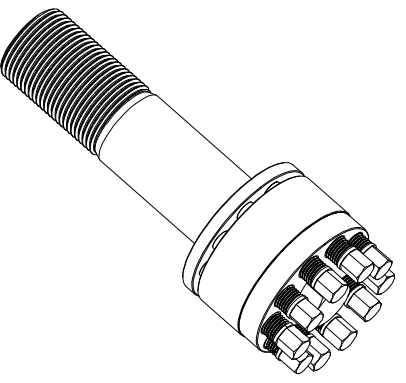
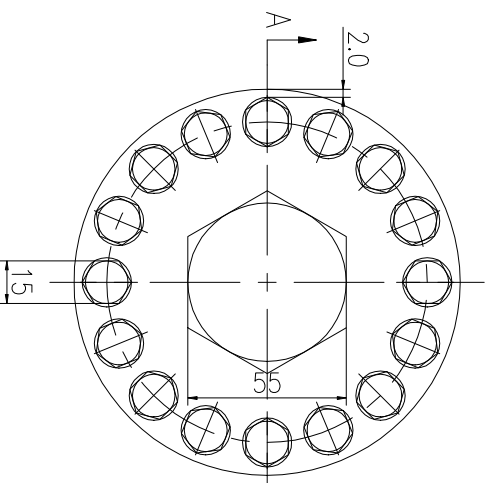


A-A



Logo
 PSN:model
 NO:drawing number
 NOM torque:**
 NOM preload:**
 MAX:max preload



PARTS LIST

PART	DWG NO.	QTY	DESCRIPTION	MATERIAL	WEIGHT(kg)
1	BBS17.516841	16	Bolt 11/16-16UN-84	CNMMo	0.16 / pcs
2	BS90681M-1	1	S-BOLT M90X6	CNMMo	/
3	BS90681M-3	1	Gasket 90.5X130X8	CNMMo	0.43

During on-site installation, please adjust the torque in conjunction with the bolt stretching distance. Without our authorization, the drawings shall not be shared with any third party, and we reserve the right to pursue legal liability against those who disclose the drawings to external parties.

上海康普曼传动机械有限公司

+86 021-61301856

KPM Power Transmission (Shanghai) Co.,Ltd

Liang.Guo@kpmdrive.com.cn

DESIGNED:	DATE:	2025.12.02	BSM-90X6	DWG NO.: BS90681M	SHEET: 1:1
REVIEWED:	DATE:	2025.12.02			
MAX PRELOAD CAPACITY	2700 KN				
LUBRICANT	G-N PLUS				
TEMPERATURE RATING	-25 C~250 C				

REV	DESCRIPTION	DWG CHECK	APPR BY	APPR DATE

The dimensions at B and L positions are tailored to the customer's specific requests

REVISION HISTORY