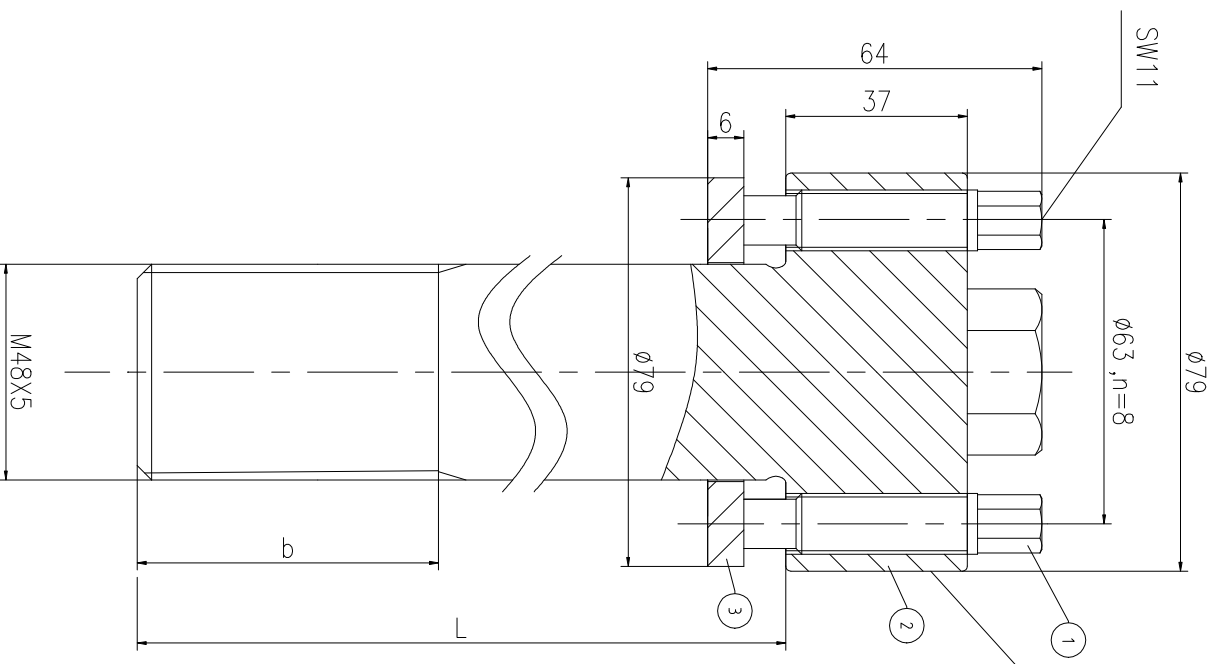
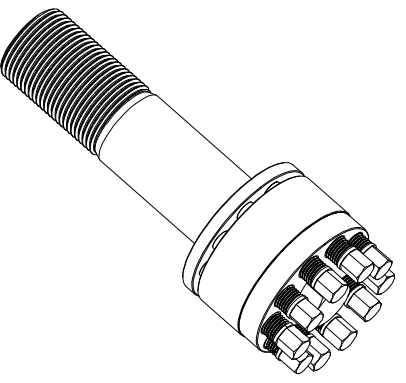
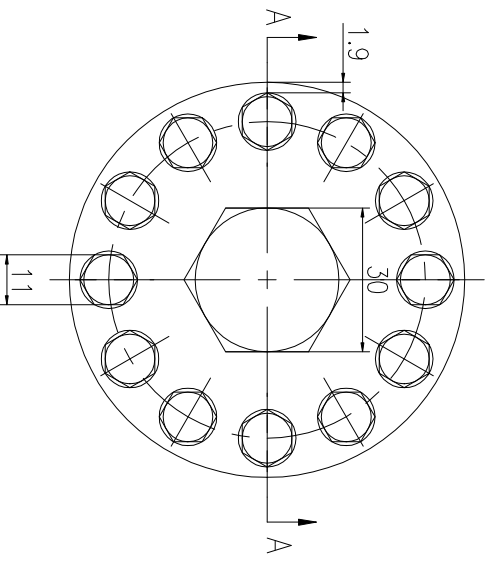


A-A



Logo
 PSN:model
 NO:drawing number
 NOM torque:**
 NOM preload:**
 MAX:max preload



PARTS LIST

PART	DWG NO.	QTY	DESCRIPTION	MATERIAL	WEIGHT(kg)
1	BBS12.720581	8	Bolt 1/2-20UNF-58	CNMMo	0.06 / pcs
2	BS48541M-1	1	S-BOLT M48X5	CNMMo	/
3	BS48541M-3	1	Gasket 48.5X79X6	CNMMo	0.14

During on-site installation, please adjust the torque in conjunction with the bolt stretching distance. Without our authorization, the drawings shall not be shared with any third party, and we reserve the right to pursue legal liability against those who disclose the drawings to external parties.

上海康普曼传动机械有限公司

KPM Power Transmission (Shanghai) Co.,Ltd
 Liang.Guo@kpmdrive.com.cn

+86 021-61301856

NOM TORQUE	121 NM
NOM PRELOAD	605 KN
MAX PRELOAD CAPACITY	800 KN
LUBRICANT	G-N PLUS
TEMPERATURE RATING	-25 C~250 C

DESIGNED:	DATE:	2025.12.02	BSM-48X5	DWG NO.: BS48541M	SHEET: 1:1
REVIEWED:	DATE:	2025.12.02			
DRAWN:			STATE: PRELIMINARY APPROVED		

REV	DESCRIPTION	DWG CHECK	APPR BY	APPR DATE

The dimensions at B and L positions are tailored to the customer's specific requests