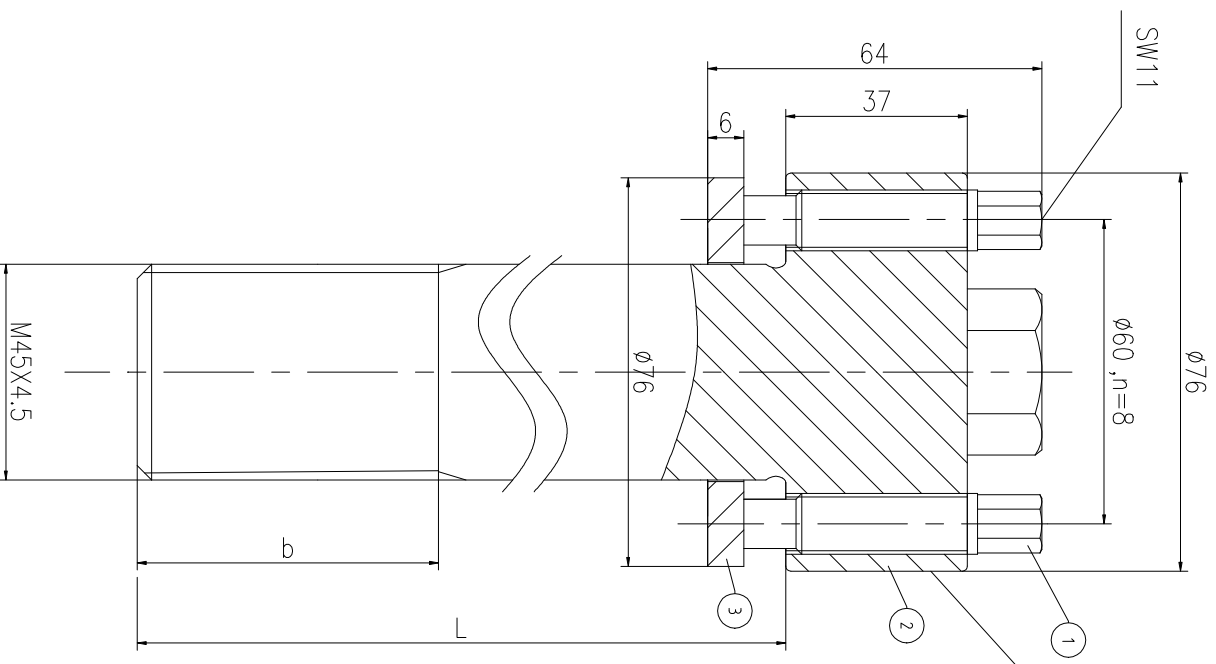
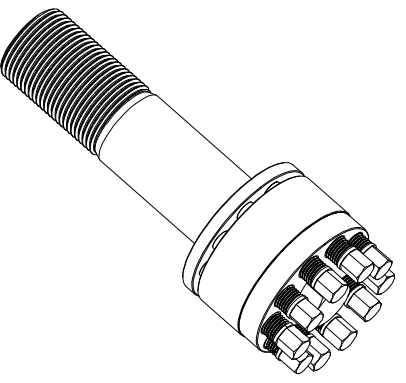
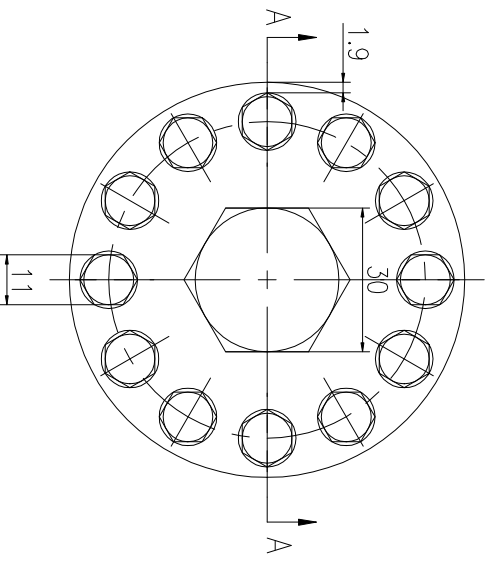


A-A



Logo
 PSN:model
 NO: drawing number
 NOM torque:**
 NOM preload:**
 MAX:max preload



PARTS LIST

| PART | DWG NO. | QTY | DESCRIPTION | MATERIAL | WEIGHT(kg) |
|------|--------------|-----|-------------------|----------|------------|
| 1 | BBS12.720581 | 8 | Bolt 1/2-20UNF-58 | CNMMo | 0.06 / pcs |
| 2 | BS454.541M-1 | 1 | S-BOLT M45X4.5 | CNMMo | / |
| 3 | BS454.541M-3 | 1 | Gasket 45.5X76X6 | CNMMo | 0.14 |

During on-site installation, please adjust the torque in conjunction with the bolt stretching distance. Without our authorization, the drawings shall not be shared with any third party, and we reserve the right to pursue legal liability against those who disclose the drawings to external parties.

上海康普曼传动机械有限公司

+86 021-61301856

KPM Power Transmission (Shanghai) Co.,Ltd
 Liang.Guo@kpmdrive.com.cn

| | |
|----------------------|-------------|
| NOM TORQUE | 107 NM |
| NOM PRELOAD | 535 KN |
| MAX PRELOAD CAPACITY | 720 KN |
| LUBRICANT | G-N PLUS |
| TEMPERATURE RATING | -25 C~250 C |

| | | | | | | | |
|-----------|-------|------------|------------|---------|------------|--------|-----|
| DESIGNED: | DATE: | 2025.12.02 | BSM-45X4.5 | DWG NO: | BS454.541M | SHEET: | 1:1 |
| REVIEWED: | DATE: | 2025.12.02 | | | | | |
| DRAWN: | DATE: | | | | | | |

The dimensions at B and L positions are tailored to the customer's specific requests

| REV | DESCRIPTION | DWG CHECK | APPR BY | APPR DATE |
|-----|-------------|-----------|---------|-----------|
| | | | | |

WEIGHT: /kg
 STATE: PRELIMINARY APPROVED