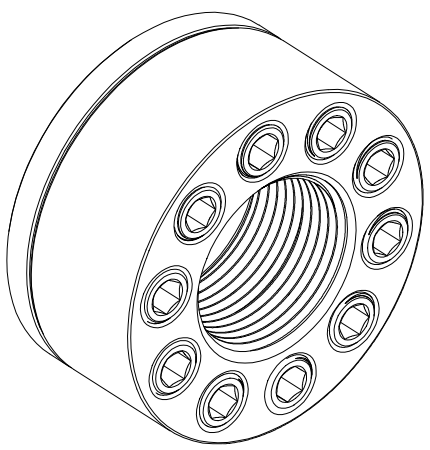
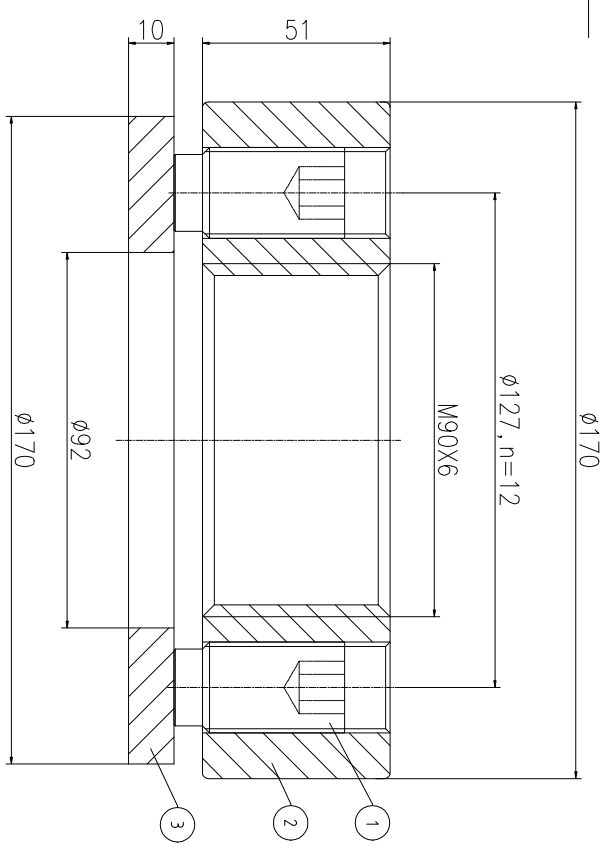
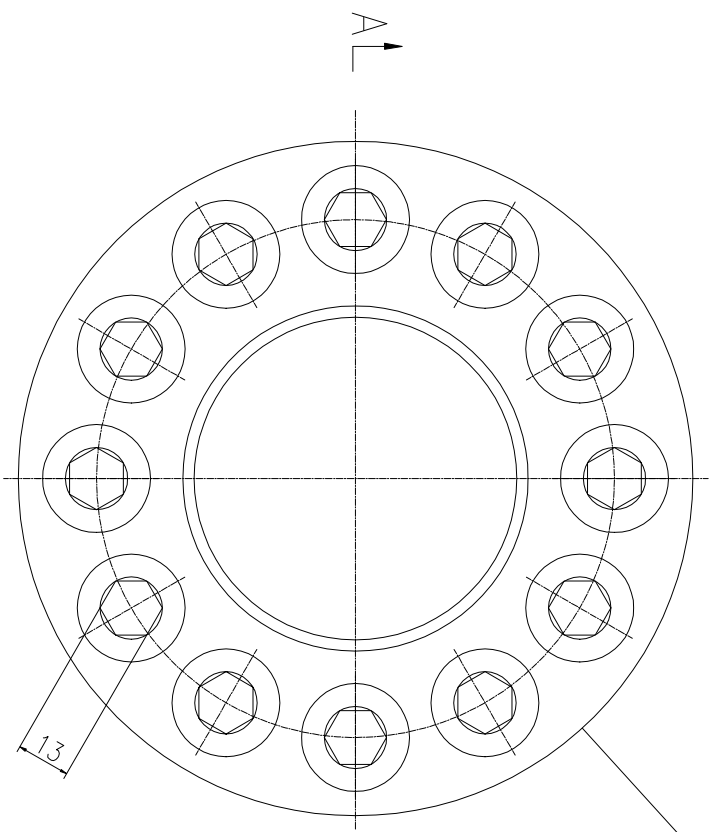


1-6 Ø1	>6-30 Ø2	>30-120 Ø3	>120-400 Ø4	>400-1000 Ø8
--------	----------	------------	-------------	--------------

UNMARKED TOLERANCES SHALL BE IMPLEMENTED IN ACCORDANCE WITH ISO 2768-MK.	REVISION HISTORY
REV	DESCRIPTION
DWG CHECK	APPR BY
APPR DATE	

Logo
 PSN:model
 NO:drawing number
 NOM torque:**
 NOM preload:**
 MAX:max preload



DWG NO. CHS90661M SHEET: 1:1

NOM TORQUE	1160 NM
NOM PRELOAD	1530 KN
MAX PRELOAD CAPACITY	307 KN
LUBRICANT	G-N PLUS
TEMPERATURE RATING	-25 C~250 C

PARTS LIST		PART	DWG NO.	QTY	DESCRIPTION	MATERIAL	WEIGHT(kg)
1	BCHS25.412511	12	Boit 1-12UNF	CNMMo	0.17 / pcs		
2	CHS90661M-1	1	Nut M90X6	CNMMo	6.36		
3	CHS90661M-3	1	Gasket 92X170X10	CNMMo	1.04		

During on-site installation, please adjust the torque in conjunction with the bolt stretching distance. Without our authorization, the drawings shall not be shared with any third party, and we reserve the right to pursue legal liability against those who disclose the drawings to external parties.

DESIGNED:	DATE:	2025.12.01	CHSM-90X6
REVIEWED:	DATE:	2025.12.01	
DRAWN:	DATE:		DWG NO.: CHS90661M

上海康普曼传动机械有限公司
 KPM Power Transmission (Shanghai) Co.,Ltd
 +86 021-61301856
 Liang.Guo@kpmdrive.com.cn

WEIGHT: 9.40 kg
 STATE: PRELIMINARY APPROVED