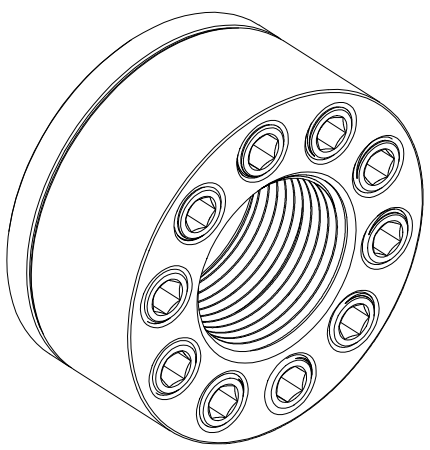
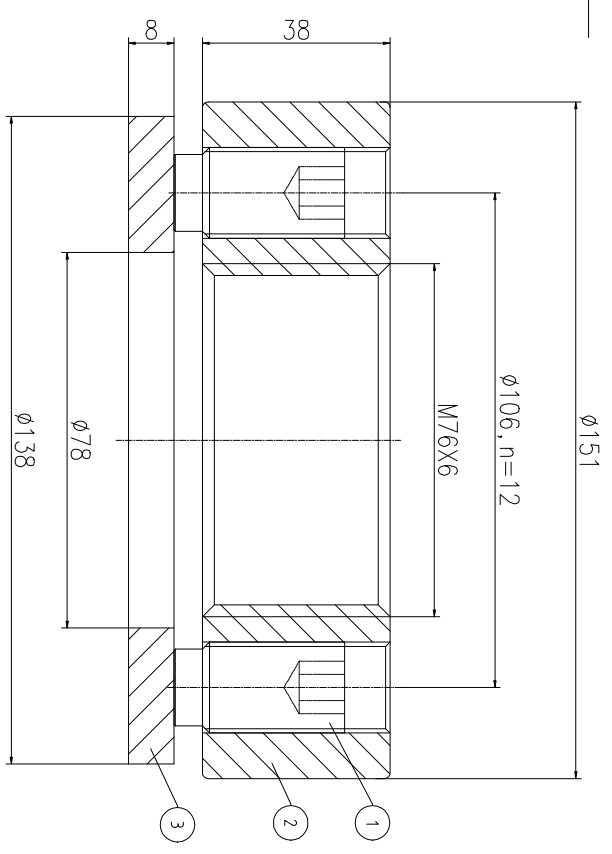
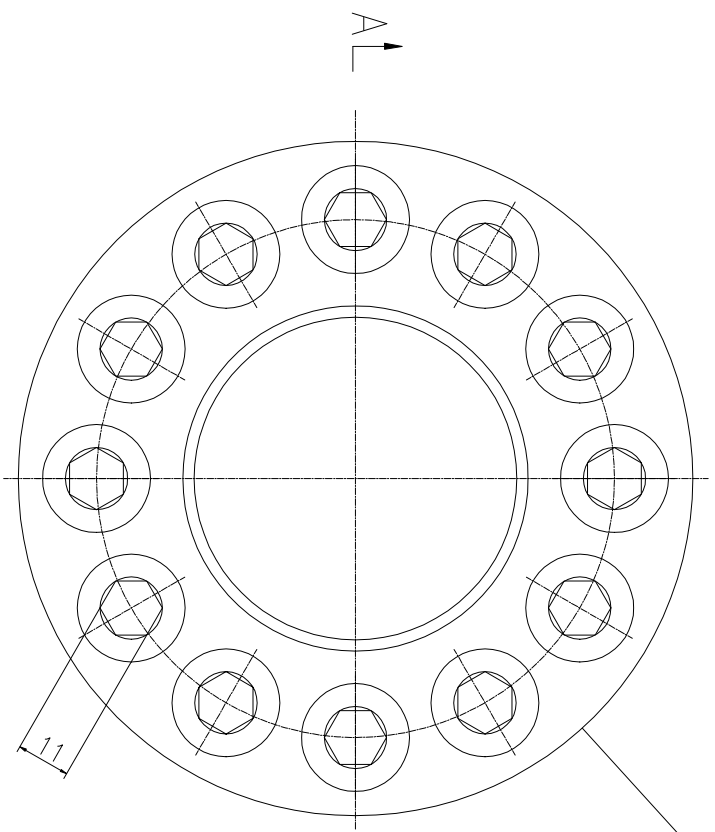


REV	DESCRIPTION	DWG CHECK	APPR BY	APPR DATE

REVISION HISTORY

Logo
 PSN:model
 NO: drawing number
 NOM torque:**
 NOM preload:**
 MAX:max preload



NOM TORQUE	860 NM
NOM PRELOAD	1130 KN
MAX PRELOAD CAPACITY	196 KN
LUBRICANT	G-N PLUS
TEMPERATURE RATING	-25 C~250 C

PARTS LIST		PART	DWG NO.	QTY	DESCRIPTION	MATERIAL	WEIGHT(kg)
1	BCHS20-716371	12	Bolt 13/16 - 16UN	CNMMo	0.08 / pcs		
2	CHS76661M-1	1	Nut M76X6	CNMMo	3.88		
3	CHS76661M-3	1	Gasket 78X138X8	CNMMo	0.63		

During on-site installation, please adjust the torque in conjunction with the bolt stretching distance. Without our authorization, the drawings shall not be shared with any third party, and we reserve the right to pursue legal liability against those who disclose the drawings to external parties.

DESIGNED:	DATE:	2025.12.01
REVIEWED:	DATE:	2025.12.01
DRAWN:	DATE:	

上海康普曼传动机械有限公司
 KPM Power Transmission (Shanghai) Co.,Ltd
 +86 021 - 61301856
 Liang.Guo@kpmdrive.com.cn

DESIGNED:	DATE:	2025.12.01
REVIEWED:	DATE:	2025.12.01
DRAWN:	DATE:	

CHSM-76X6
 CHS76661M

WEIGHT: 5.50 kg
 STATE: PRELIMINARY APPROVED