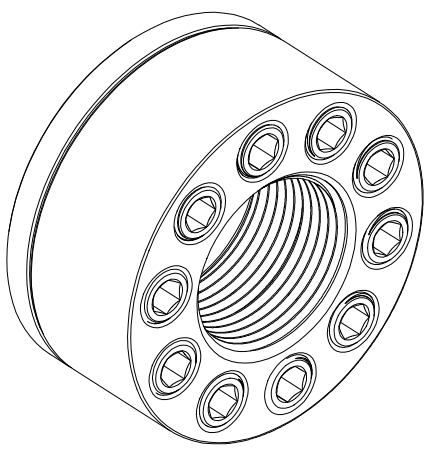
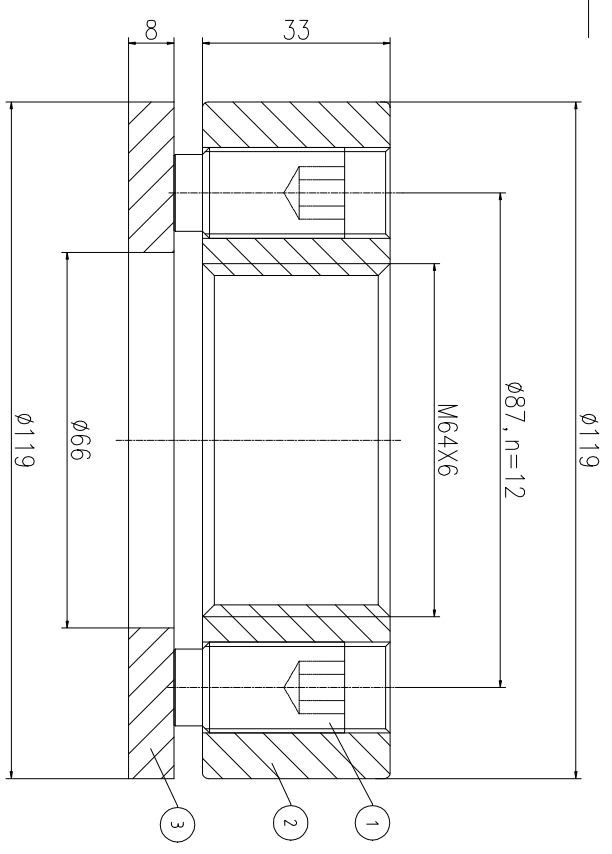
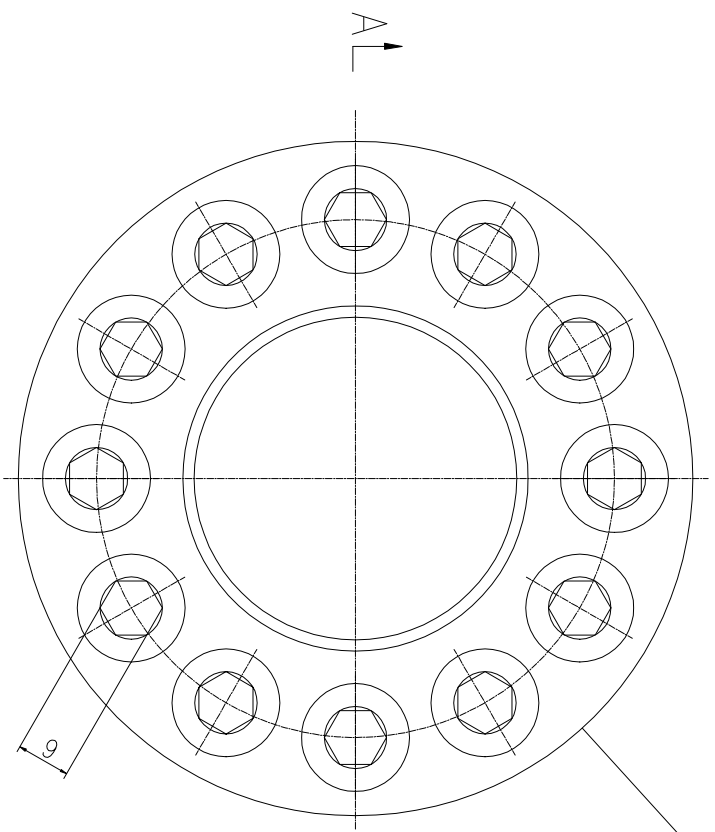


REV	DESCRIPTION	DWG CHECK	APPR BY	APPR DATE

REVISION HISTORY

Logo
 PSN:model
 NO:drawing number
 NOM torque:**
 NOM preload:**
 MAX:max preload



PARTS LIST		PART	DWG NO.	QTY	DESCRIPTION	MATERIAL	WEIGHT(kg)
1	BCHS17.516301	12	Bolt 11/16-16UN	CNMMo	0.04 / pcs		
2	CHS64661M-1	1	Nut M6X6	CNMMo	1.97		
3	CHS64661M-3	1	Gasket 66X119X8	CNMMo	0.49		

During on-site installation, please adjust the torque in conjunction with the bolt stretching distance. Without our authorization, the drawings shall not be shared with any third party, and we reserve the right to pursue legal liability against those who disclose the drawings to external parties.

NOM TORQUE	570 NM
NOM PRELOAD	760 KN
MAX PRELOAD CAPACITY	104 KN
LUBRICANT	G-N PLUS
TEMPERATURE RATING	-25 C~250 C

上海康普曼传动机械有限公司		+86 021-61301856	
KPM Power Transmission (Shanghai) Co.,Ltd		Liang.Guo@kpmdrive.com.cn	
DESIGNED:	DATE: 2025.12.01	CHSM-64X6	SHEET: 1:1
REVIEWED:	DATE: 2025.12.01		
DRAWN:	DATE:	DWG NO: CHS64661M	STATE: PRELIMINARY APPROVED