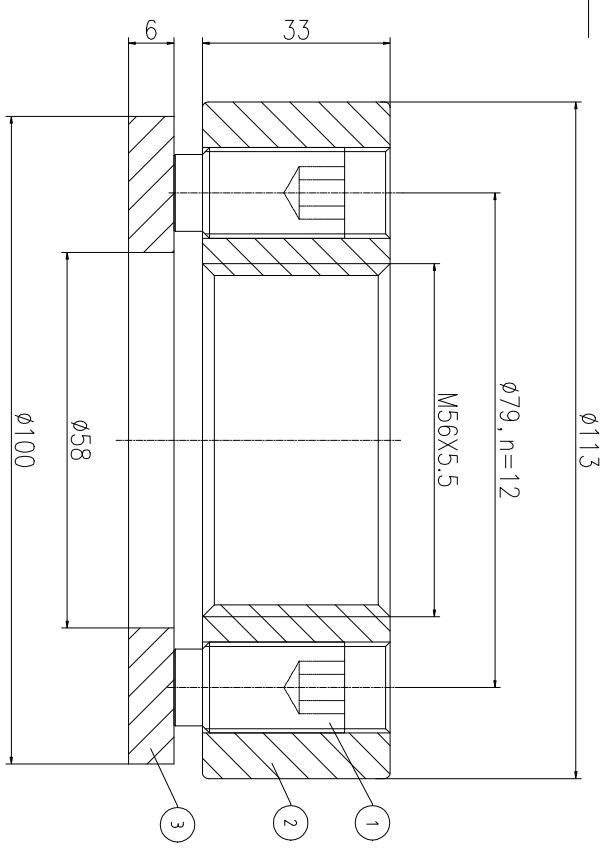
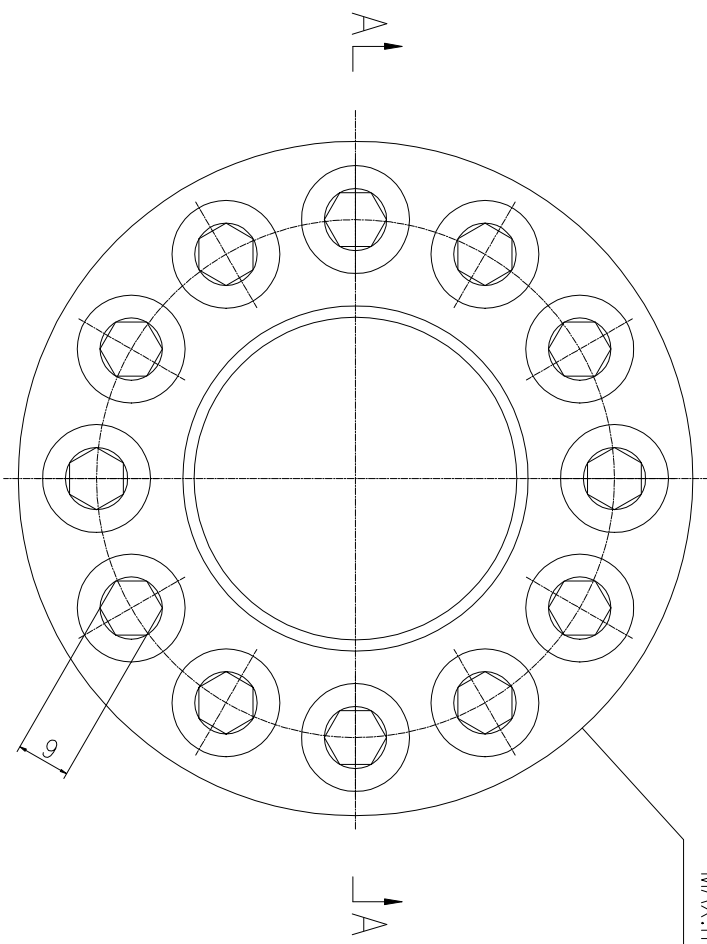


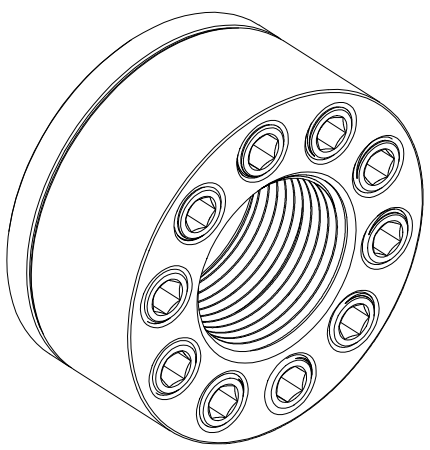
1-6 Ø1	>6-30 Ø2	>30-120 Ø3	>120-400 Ø4	>400-1000 Ø8
--------	----------	------------	-------------	--------------

UNMARKED TOLERANCES SHALL BE IMPLEMENTED IN ACCORDANCE WITH ISO 2768-MK.	REVISION HISTORY
REV	DESCRIPTION
DWG CHECK	APPR BY
APPR DATE	

Logo
 PSN:model
 NO: drawing number
 NOM torque:**
 NOM preload:**
 MAX:max preload



A-A



DWG NO. CHS565.561M SHEET: 1:1

NOM TORQUE	570 NM
NOM PRELOAD	760 KN
MAX PRELOAD CAPACITY	104 KN
LUBRICANT	G-N PLUS
TEMPERATURE RATING	-25 C~250 C

PART	DWG NO.	QTY	DESCRIPTION	MATERIAL	WEIGHT(kg)
1	BCHS17.516301	12	Bolt 11/16-16UN	CNMMo	0.04 / pcs
2	CHS565.561M-1	1	Nut M56X5.5	CNMMo	1.89
3	CHS565.561M-3	1	Gasket 58X100X6	CNMMo	0.24

During on-site installation, please adjust the torque in conjunction with the bolt stretching distance. Without our authorization, the drawings shall not be shared with any third party, and we reserve the right to pursue legal liability against those who disclose the drawings to external parties.

上海康普曼传动机械有限公司
 KPM Power Transmission (Shanghai) Co.,Ltd
 +86 021-61301856
 Liang.Guo@kpmdrive.com.cn

DESIGNED: DATE: 2025.12.01
 REVIEWED: DATE: 2025.12.01
 DRAWN: DATE:

DWG NO.: CHS565.561M SHEET: 1:1

WEIGHT: 2.63 kg
 STATE: PRELIMINARY APPROVED