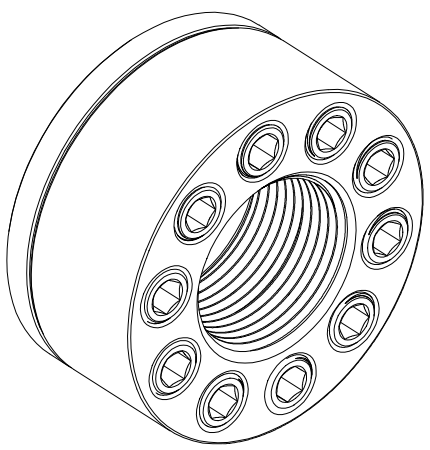
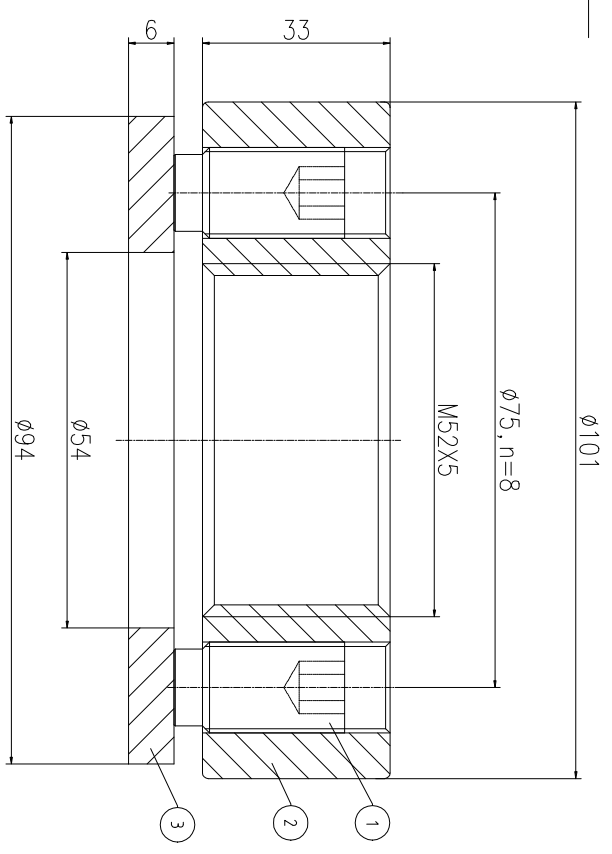
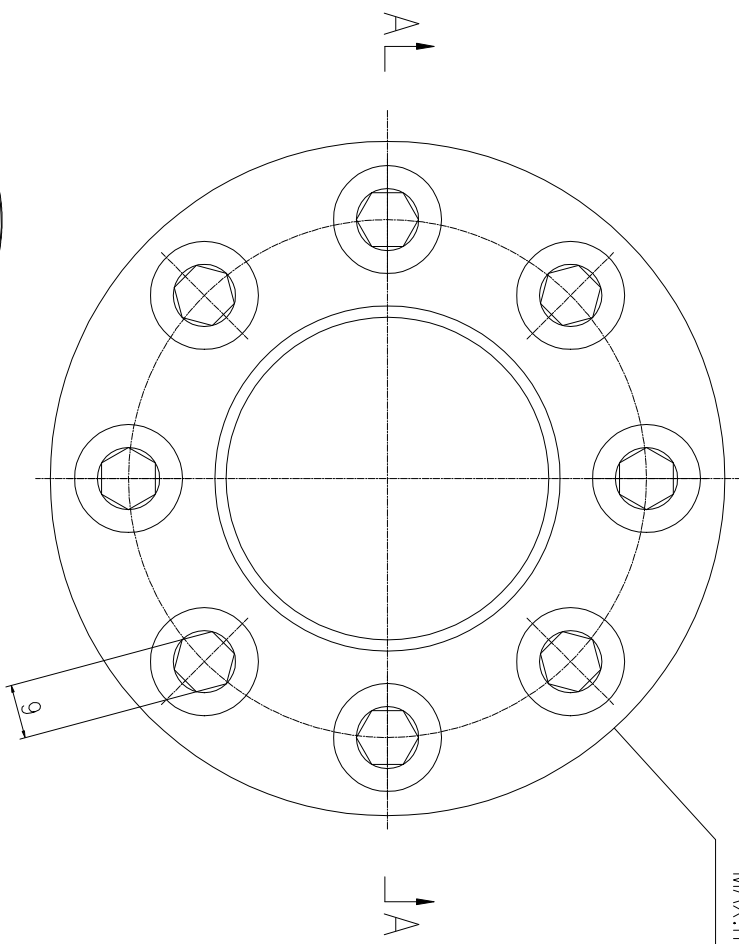


REV	DESCRIPTION	DWG CHECK	APPR BY	APPR DATE

Logo
 PSN:model
 NO:drawing number
 NOM torque:**
 NOM preload:**
 MAX:max preload



NOM TORQUE	380 NM
NOM PRELOAD	500 KN
MAX PRELOAD CAPACITY	104 KN
LUBRICANT	G-N PLUS
TEMPERATURE RATING	-25 C~250 C

PARTS LIST		PART	DWG NO.	QTY	DESCRIPTION	MATERIAL	WEIGHT(kg)
1	BCHS17.516301	8	Bolt 11/16-16UN	CNMo	0.04 / pcs		
2	CHS52541M-1	1	Nut M52X5	CNMo	1.46		
3	CHS52541M-3	1	Gasket 54X94X6	CNMo	0.21		

During on-site installation, please adjust the torque in conjunction with the bolt stretching distance. Without our authorization, the drawings shall not be shared with any third party, and we reserve the right to pursue legal liability against those who disclose the drawings to external parties.

上海康普曼传动机械有限公司		+86 021-61301856	
KPM Power Transmission (Shanghai) Co.,Ltd		Liang.Guo@kpmdrive.com.cn	
DESIGNED:	DATE: 2025.12.01	CHSM-52X5	SHEET: 1:1
REVIEWED:	DATE: 2025.12.01		
DRAWN:	DATE:	DWG NO: CHS52541M	STATE: PRELIMINARY APPROVED