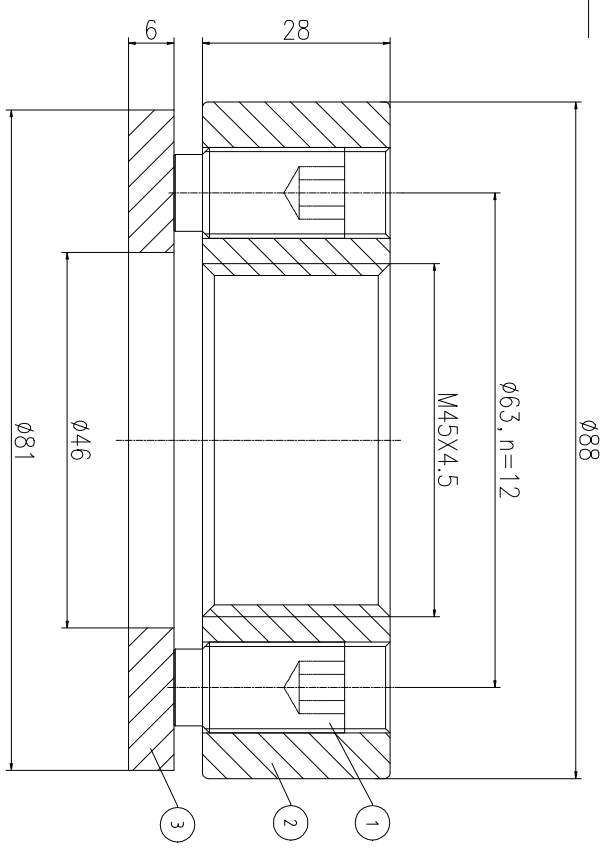
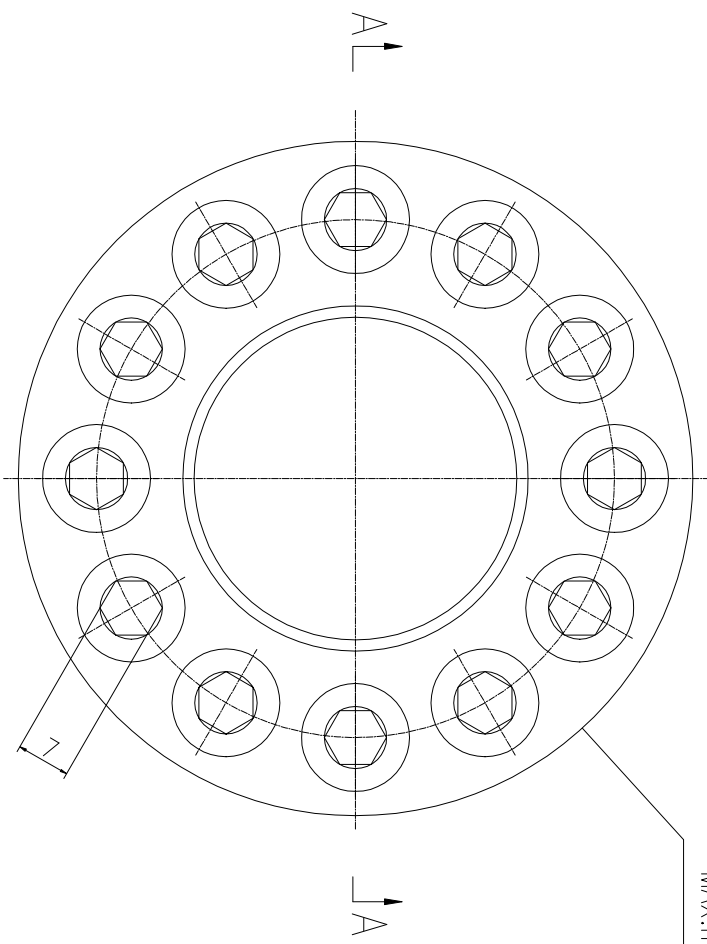


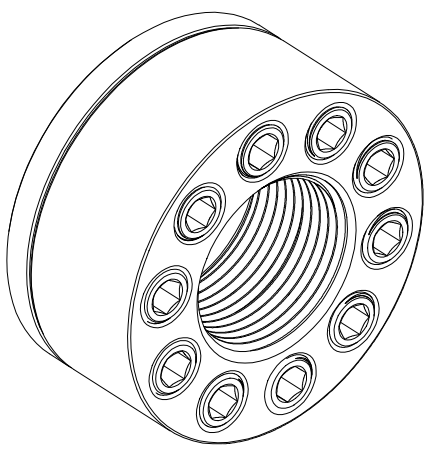
REV	DESCRIPTION	DWG CHECK	APPR BY	APPR DATE

REVISION HISTORY

Logo
 PSN:model
 NO: drawing number
 NOM torque:**
 NOM preload:**
 MAX:max preload



A-A



PARTS LIST					
PART	DWG NO.	QTY	DESCRIPTION	MATERIAL	WEIGHT(kg)
1	BCHS12.7Z0271	12	Bolt 1/2-20UNF	CNMMo	0.02 / pcs
2	CHS454.561M-1	1	Nut M45X4.5	CNMMo	0.94
3	CHS454.561M-3	1	Gasket 46X81X6	CNMMo	0.18

During on-site installation, please adjust the torque in conjunction with the bolt stretching distance. Without our authorization, the drawings shall not be shared with any third party, and we reserve the right to pursue legal liability against those who disclose the drawings to external parties.

上海康普曼传动机械有限公司

KPM Power Transmission (Shanghai) Co.,Ltd

+86 021-61301856

Liang.Guo@kpmdrive.com.cn

NOM TORQUE	315 NM
NOM PRELOAD	420 KN
MAX PRELOAD CAPACITY	41 KN
LUBRICANT	G-N PLUS
TEMPERATURE RATING	-25 C~250 C

DESIGNED:	DATE:	2025.12.01	CHSM-45X4.5	DWG NO:	CHS454.561M	SHEET:	1:1
REVIEWED:	DATE:	2025.12.01					
DRAWN:	DATE:						
			WEIGHT:	PRELIMINARY APPROVED			
			STATE:				