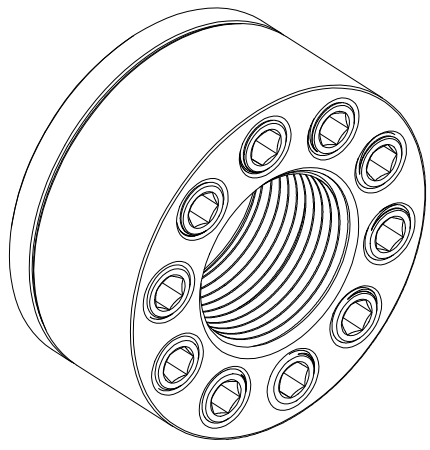
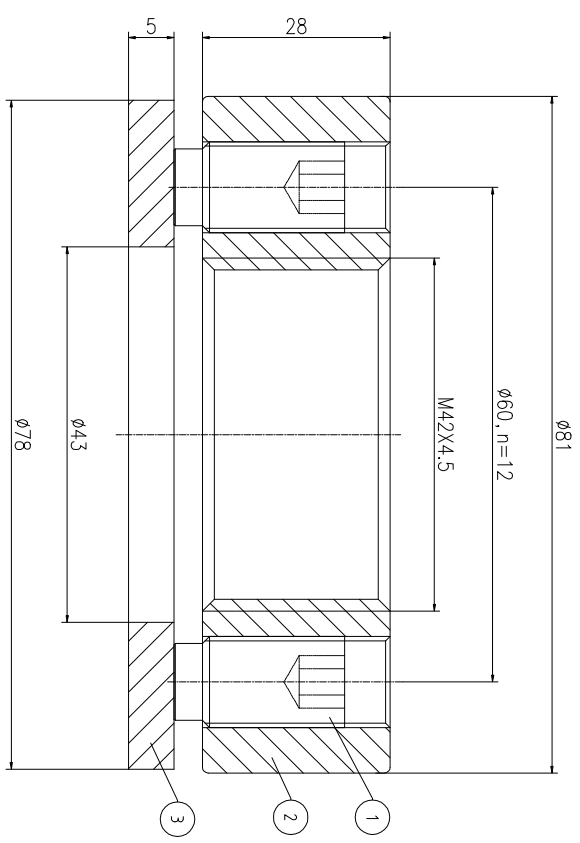
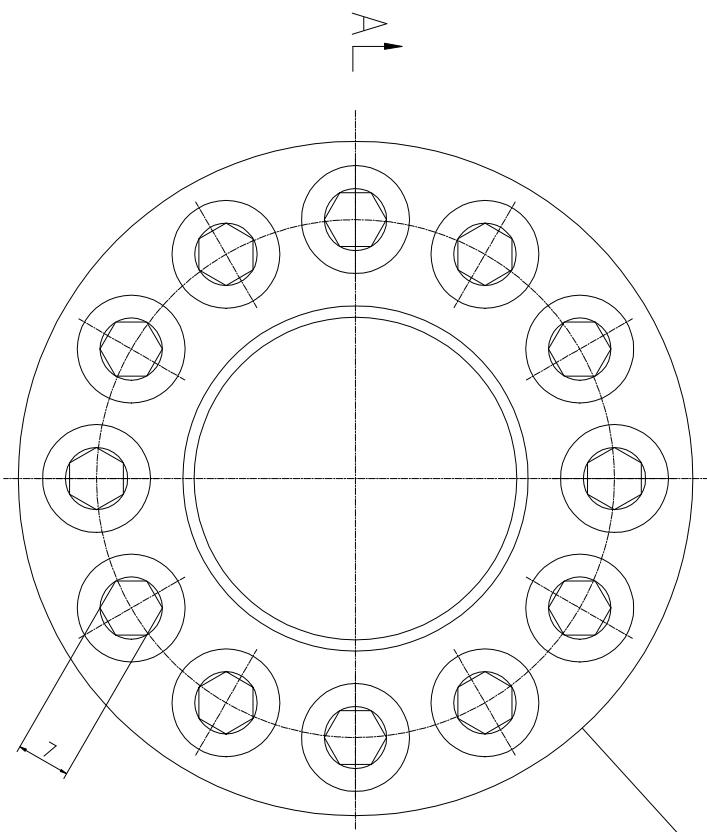


REV	DESCRIPTION	DWG CHECK	APPR BY	APPR DATE

REVISION HISTORY

Logo
 PSN:model
 NO:drawing number
 NOM torque:**
 NOM preload:**
 MAX:max preload

A-A



NOM TORQUE	315 NM
NOM PRELOAD	420 KN
MAX PRELOAD CAPACITY	41 KN
LUBRICANT	G-N PLUS
TEMPERATURE RATING	-25 C~250 C

PARTS LIST		PART	DWG NO.	QTY	DESCRIPTION	MATERIAL	WEIGHT(kg)
1	BCHS12.7Z0271	12	Bolt 1/2-20UNF	CNMMo	0.02 / pcs		
2	CHS424.561M-1	1	Nut M42X4.5	CNMMo	0.78		
3	CHS424.561M-3	1	Washer 43X78X5	CNMMo	0.13		

During on-site installation, please adjust the torque in conjunction with the bolt stretching distance. Without our authorization, the drawings shall not be shared with any third party, and we reserve the right to pursue legal liability against those who disclose the drawings to external parties.

DESIGNED: DATE: 2025.12.01	CHSM-42X4.5
REVIEWED: DATE: 2025.12.01	
DRAWN: DATE:	

上海康普曼传动机械有限公司	+86 021-61301856
KPM Power Transmission (Shanghai) Co.,Ltd	Liang.Guo@kpmdrive.com.cn

DWG NO: CHS424.561M	SHEET: 1:1
WEIGHT: 1.15 kg	STATE: PRELIMINARY APPROVED