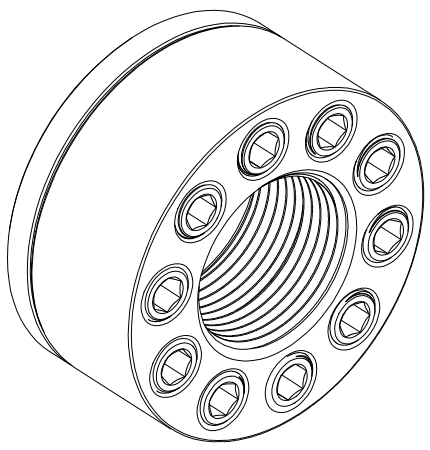
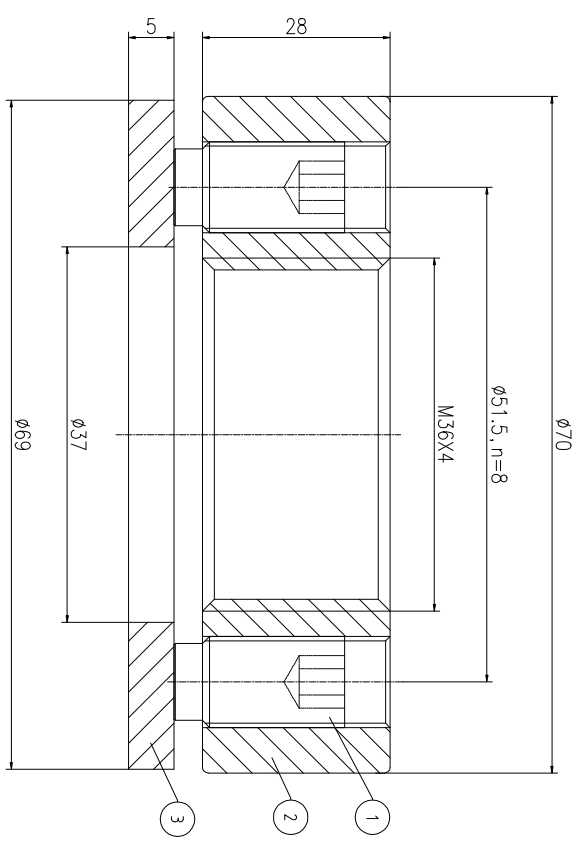
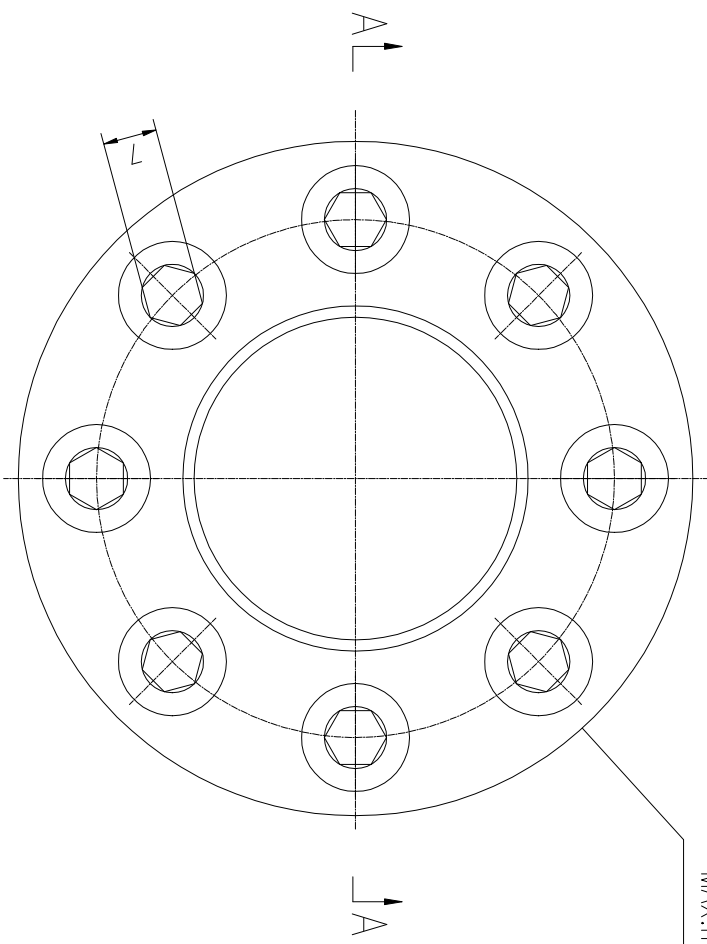


REVISION HISTORY				
REV	DESCRIPTION	DWG CHECK	APPR BY	APPR DATE

Logo
 PSN:model
 NO:drawing number
 NOM torque:**
 NOM preload:**
 MAX:max preload



NOM TORQUE	190 NM
NOM PRELOAD	245 KN
MAX PRELOAD CAPACITY	38 KN
LUBRICANT	G-N PLUS
TEMPERATURE RATING	-25 C~250 C

上海康普曼传动机械有限公司		+86 021-61301856	
KPM Power Transmission (Shanghai) Co.,Ltd		Liang.Guo@kpmdrive.com.cn	
DESIGNED:	DATE: 2025.12.01	CHSM-36X4	SHEET: 1:1
REVIEWED:	DATE: 2025.12.01		
DRAWN:	DATE:		
DWG NO:	CHS36441M	PRELIMINARY APPROVED	

PARTS LIST					
PART	DWG NO.	QTY	DESCRIPTION	MATERIAL	WEIGHT(kg)
1	BCHS12.7Z0271	8	Bolt 1/2-20UNF	CNMMo	0.02 /pcs
2	CHS36441M-1	1	Nut M36X4	CNMMo	0.56
3	CHS36441M-3	1	Gasket 37X69X5	CNMMo	0.10

During on-site installation, please adjust the torque in conjunction with the bolt stretching distance. Without our authorization, the drawings shall not be shared with any third party, and we reserve the right to pursue legal liability against those who disclose the drawings to external parties.