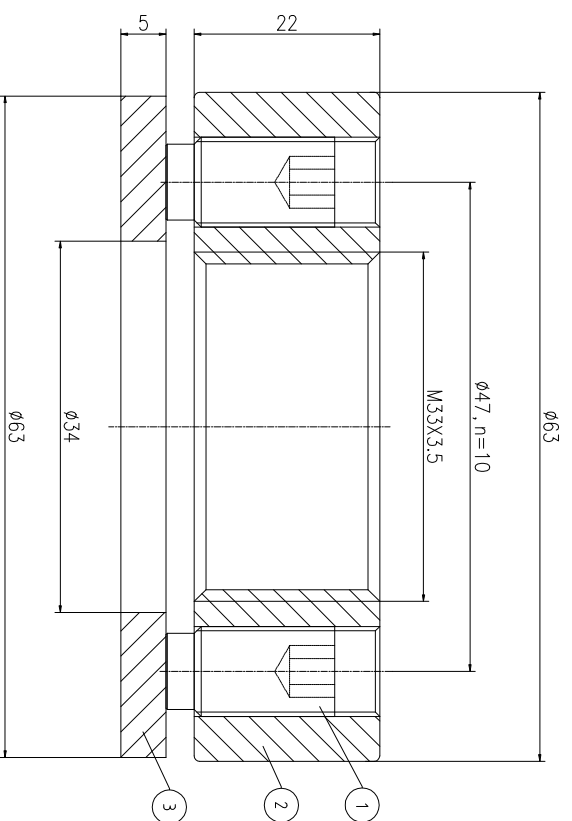
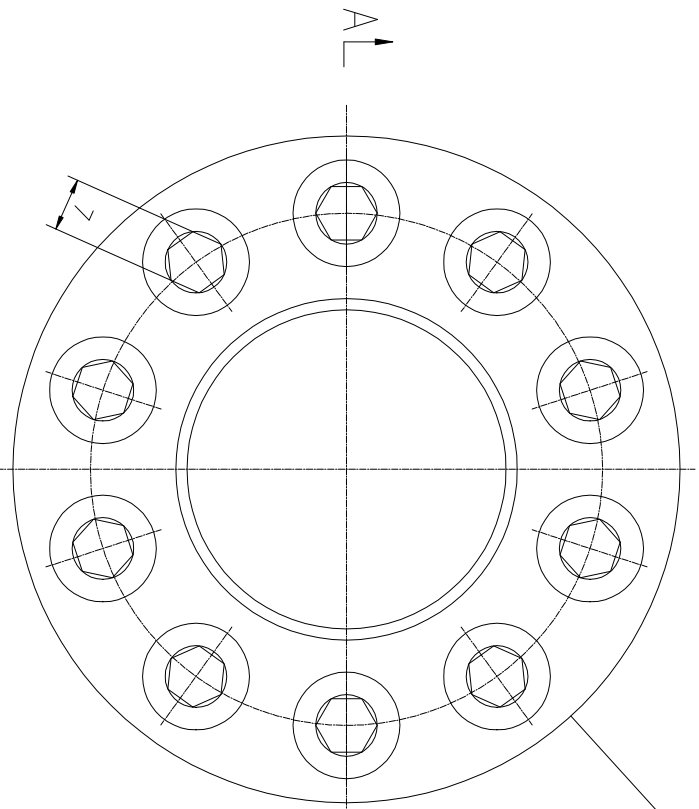


REV	DESCRIPTION	DWG CHECK	APPR BY	APPR DATE

Logo  
 PSN:model  
 NO:drawing number  
 NOM torque:\*\*  
 NOM preload:\*\*  
 MAX:max preload

A-A



PARTS LIST

PART	DWG NO.	QTY	DESCRIPTION	MATERIAL	WEIGHT(kg)
1	BCHS11.120211	10	Bolt 7/16-20UNF	CNiMo	0.01 / pcs
2	CHS10 .551M-1	1	Nut M33X3.5	CNiMo	0.37
3	CHS10 .551M-3	1	Gasket 34X63X5	CNiMo	0.08

During on-site installation, please adjust the torque in conjunction with the bolt stretching distance. Without our authorization, the drawings shall not be shared with any third party, and we reserve the right to pursue legal liability against those who disclose the drawings to external parties.

上海康普曼传动机械有限公司  
 KPM Power Transmission (Shanghai) Co., Ltd  
 +86 021-61301856  
 Liong Guo@kpmdrive.com.cn

NOM TORQUE	155 NM
NOM PRELOAD	200 KN
MAX PRELOAD CAPACITY	22 KN
LUBRICANT	G-N PLUS
TEMPERATURE RATING	-25 C~250 C

DESIGNED:	DATE:	2025.12.01	CHSM-33X3.5
REVIEWED:	DATE:	2025.12.01	
DRAWN:	DATE:		DWG NO: CHS10 .551M
			SHEET: 1:1
			PRELIMINARY APPROVED

