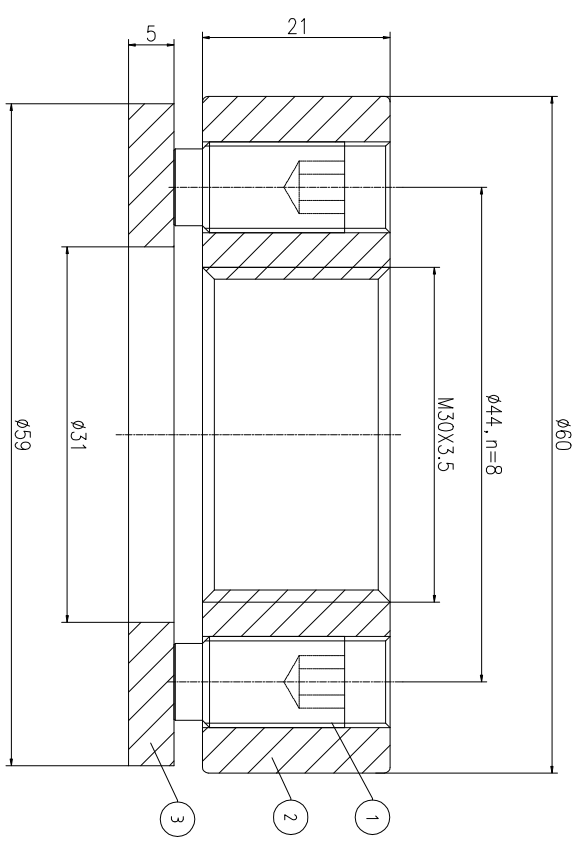
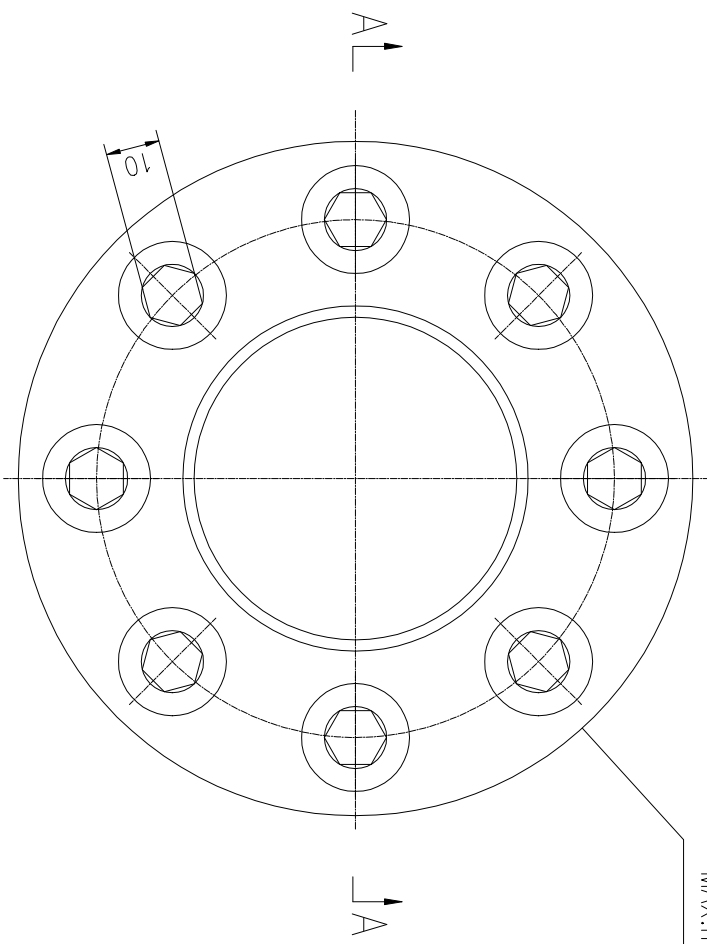
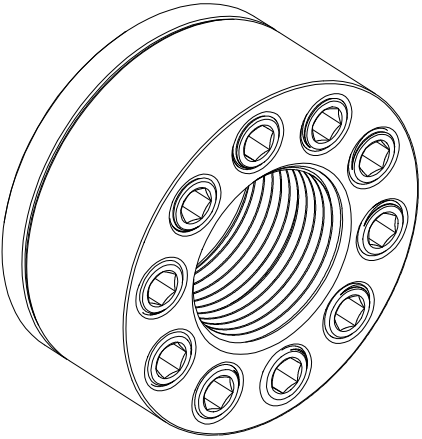


REV	DESCRIPTION	DWG CHECK	APPR BY	APPR DATE

Logo  
 PSN:model  
 NO:drawing number  
 NOM torque:\*\*  
 NOM preload:\*\*  
 MAX:max preload



A-A



NOM TORQUE	135 NM
NOM PRELOAD	180 KN
MAX PRELOAD CAPACITY	23 KN
LUBRICANT	G-N PLUS
TEMPERATURE RATING	-25 C~250 C

PARTS LIST		PART	DWG NO.	QTY	DESCRIPTION	MATERIAL	WEIGHT(kg)
1	BCHS11.120211	8	Bolt 7/16-20UNF	CNMMo	0.01/pcs		
2	CHS303.541M-1	1	Nut M30X3.5	CNMMo	0.33		
3	CHS303.541M-3	1	Gasket 31X59X5	CNMMo	0.08		

During on-site installation, please adjust the torque in conjunction with the bolt stretching distance. Without our authorization, the drawings shall not be shared with any third party, and we reserve the right to pursue legal liability against those who disclose the drawings to external parties.

DESIGNED: DATE: 2025.12.02	KPM Power Transmission (Shanghai) Co.,Ltd	CHSM-30X3.5	DWG NO.: CHS303.541M	SHEET: 1:1
REVIEWED: DATE: 2025.12.02				
DRAWN: DATE:				

上海康普曼传动机械有限公司      +86 021-61301856  
 KPM Power Transmission (Shanghai) Co.,Ltd      Liang.Guo@kpmdrive.com.cn

WEIGHT: 0.49 kg  
 STATE: PRELIMINARY APPROVED