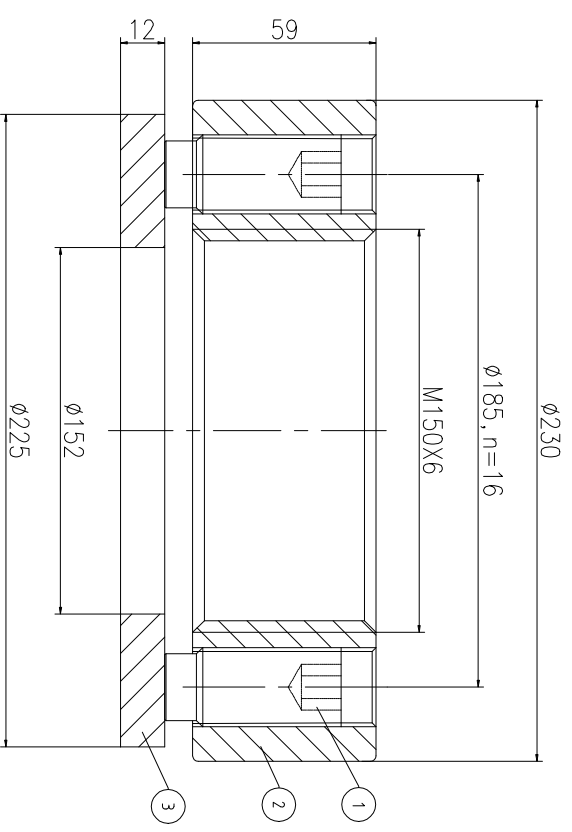
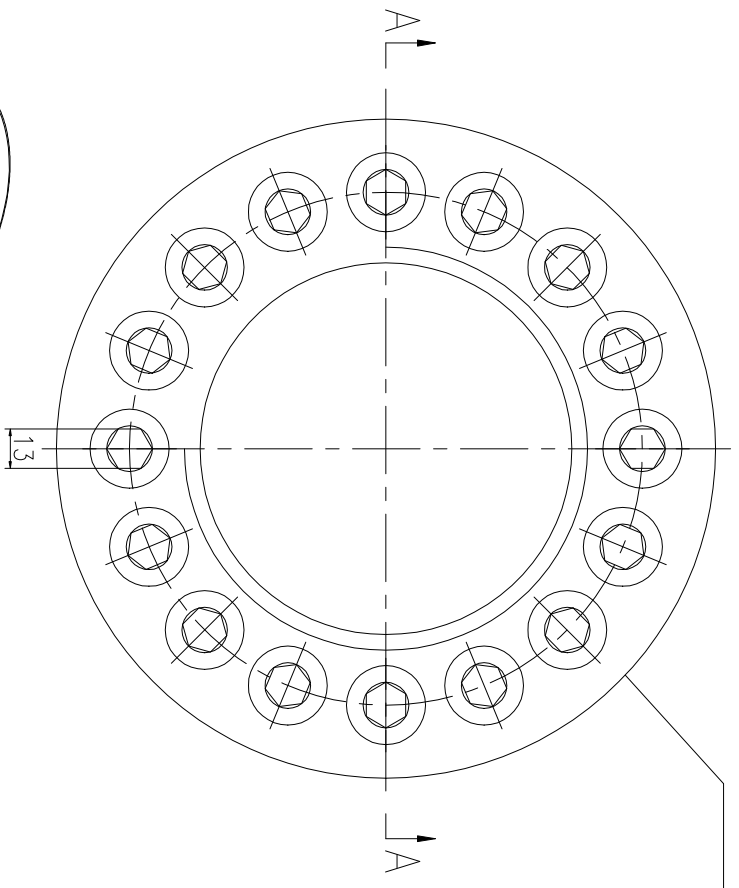


Logo
 PSN:model
 NO:drawing number
 NOM torque:**
 NOM preload:**
 MAX:max preload



A-A

PARTS LIST

PART	DWG NO.	QTY	DESCRIPTION	MATERIAL	WEIGHT(kg)
1	BCHS25.412581	16	Boit 1-12UNF	CNMMo	0.19 /pcs
2	CHS150681M-1	1	Nut M150X6	CNMMo	10.72
3	CHS150681M-3	1	Gasket 152X225X12	CNMMo	2.01

During on-site installation, please adjust the torque in conjunction with the bolt stretching distance. Without our authorization, the drawings shall not be shared with any third party, and we reserve the right to pursue legal liability against those who disclose the drawings to external parties.

NOM TORQUE	1550 NM
NOM PRELOAD	2040 KN
MAX PRELOAD CAPACITY	307 KN
LUBRICANT	G-N PLUS
TEMPERATURE RATING	-25 C~250 C

上海康普曼传动机械有限公司		+86 021-61301856	
KPM Power Transmission (Shanghai) Co.,Ltd		Liang.Guo@kpmdrive.com.cn	
DESIGNED:	DATE: 2025.12.01	CHSM-150X6	SHEET: 1:1
REVIEWED:	DATE: 2025.12.01		
DRAWN:	DATE:		
DWG NO: CHS150681M		STATE: PRELIMINARY APPROVED	

