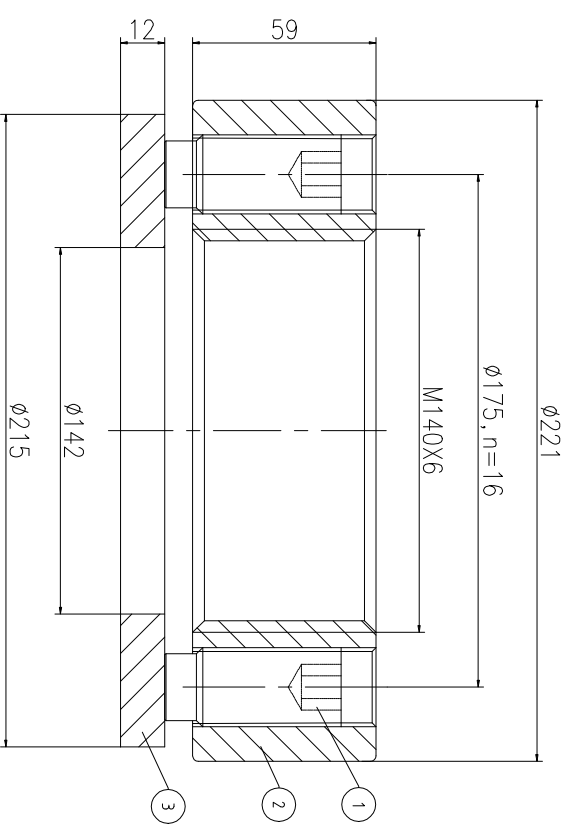
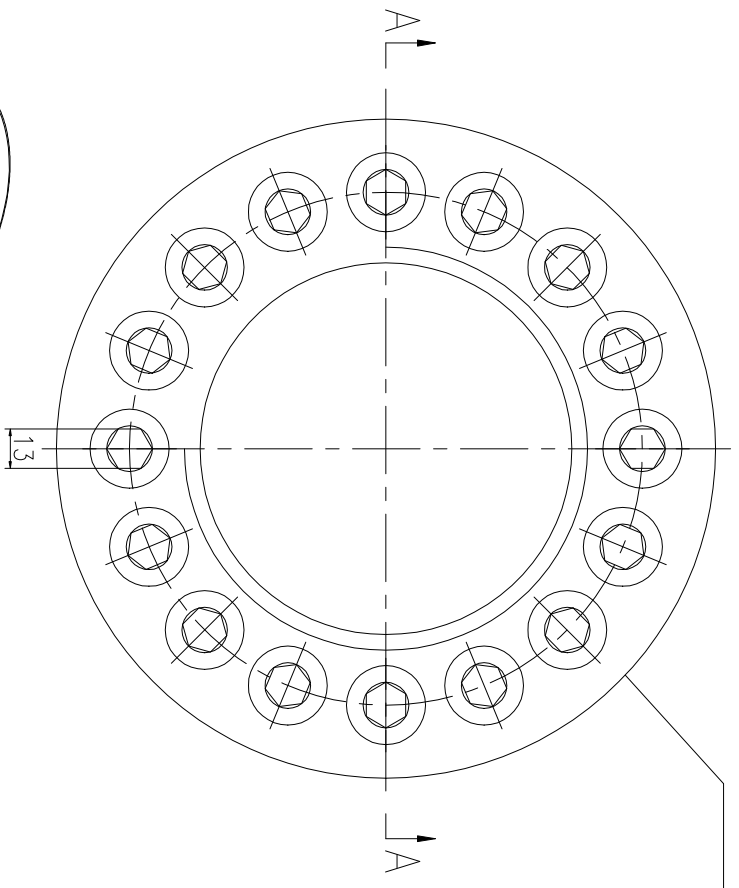


Logo  
 PSN:model  
 NO:drawing number  
 NOM torque:\*\*  
 NOM preload:\*\*  
 MAX:max preload



A-A

PARTS LIST

PART	DWG NO.	QTY	DESCRIPTION	MATERIAL	WEIGHT(kg)
1	BCHS25.412581	16	Boit 1-12UNF	CNMMo	0.19 /pcs
2	CHS140681M-1	1	Nut M140X6	CNMMo	10.32
3	CHS140681M-3	1	Gasket 142X215X12	CNMMo	1.91

During on-site installation, please adjust the torque in conjunction with the bolt stretching distance. Without our authorization, the drawings shall not be shared with any third party, and we reserve the right to pursue legal liability against those who disclose the drawings to external parties.

NOM TORQUE	1550 NM
NOM PRELOAD	2040 KN
MAX PRELOAD CAPACITY	307 KN
LUBRICANT	G-N PLUS
TEMPERATURE RATING	-25 C~250 C

上海康普曼传动机械有限公司		+86 021-61301856	
KPM Power Transmission (Shanghai) Co.,Ltd		Liang.Guo@kpmdrive.com.cn	
DESIGNED:	DATE: 2025.12.01	CHSM-140X6	WEIGHT: 15.25 kg
REVIEWED:	DATE: 2025.12.01		
DRAWN:	DATE:		
DWG NO: CHS140681M		SHEET: 1:1	PRELIMINARY APPROVED

