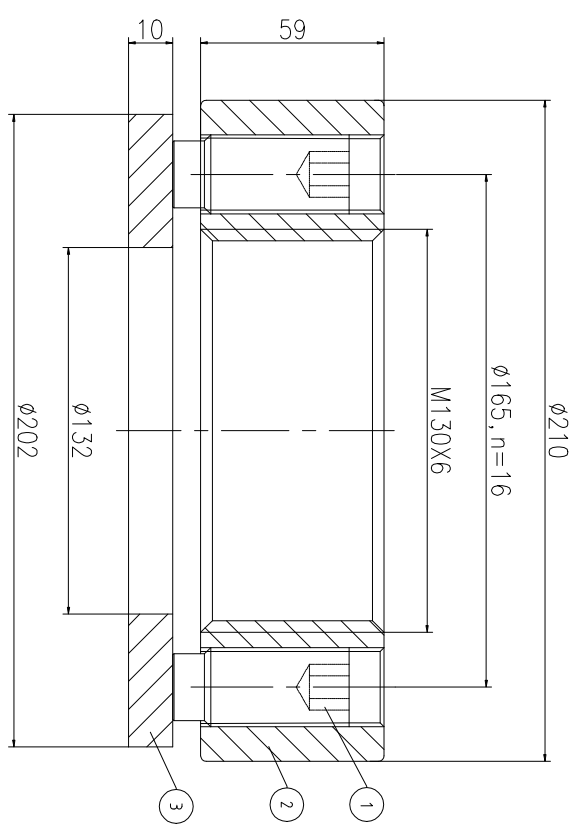
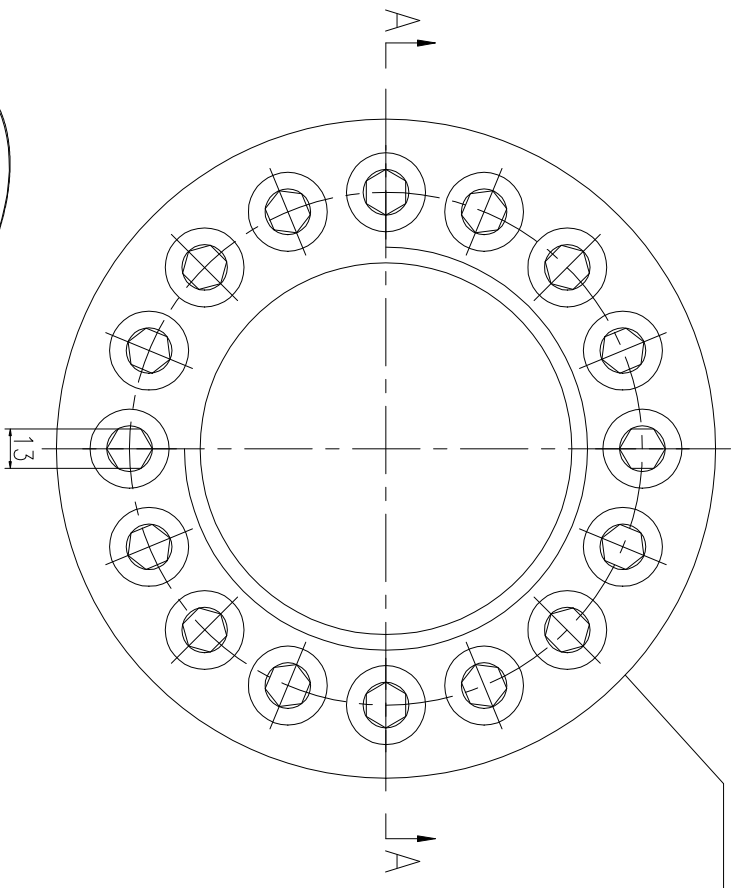
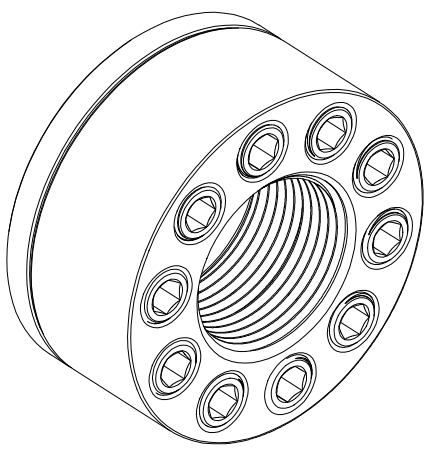


REV	DESCRIPTION	DWG CHECK	APPR BY	APPR DATE

Logo  
 PSN:model  
 NO:drawing number  
 NOM torque:\*\*  
 NOM preload:\*\*  
 MAX:max preload



A-A



NOM TORQUE	1550 NM
NOM PRELOAD	2040 KN
MAX PRELOAD CAPACITY	307 KN
LUBRICANT	G-N PLUS
TEMPERATURE RATING	-25 C~250 C

PARTS LIST		MATERIAL	WEIGHT(kg)		
PART	DWG NO.	QTY	DESCRIPTION	MATERIAL	WEIGHT(kg)
1	BCHS25.412581	16	Boit 1-12UNF	CNMMo	0.19 /pcs
2	CHS130681M-1	1	Nut M130X6	CNMMo	9.60
3	CHS130681M-3	1	Gasket 132X202X10	CNMMo	1.42

During on-site installation, please adjust the torque in conjunction with the bolt stretching distance. Without our authorization, the drawings shall not be shared with any third party, and we reserve the right to pursue legal liability against those who disclose the drawings to external parties.

DESIGNED:	DATE:	2025.12.01	CHSM-130X6
REVIEWED:	DATE:	2025.12.01	
DRAWN:	DATE:		

DWG NO.:	CHS130681M	SHEET:	1:1
----------	------------	--------	-----

上海康普曼传动机械有限公司  
 KPM Power Transmission (Shanghai) Co.,Ltd  
 +86 021-61301856  
 Liang.Guo@kpmdrive.com.cn

WEIGHT: 14.05 kg  
 STATE: PRELIMINARY APPROVED