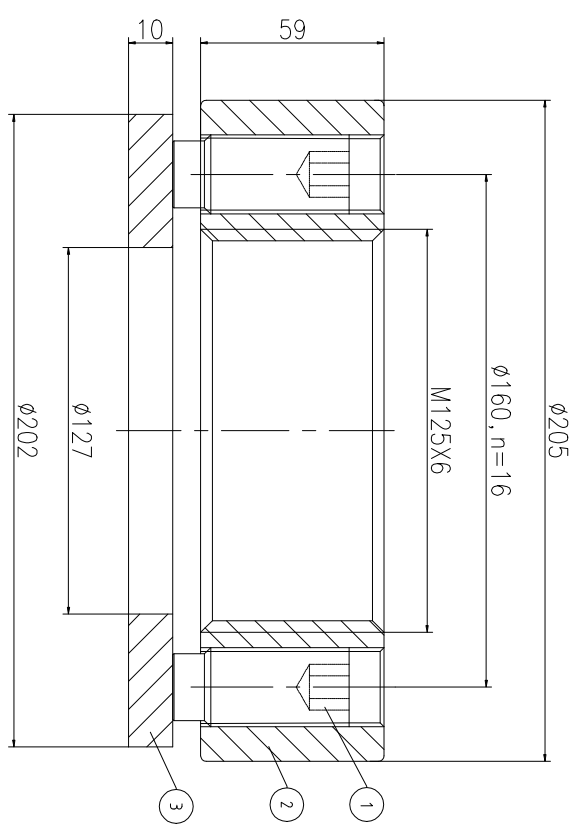
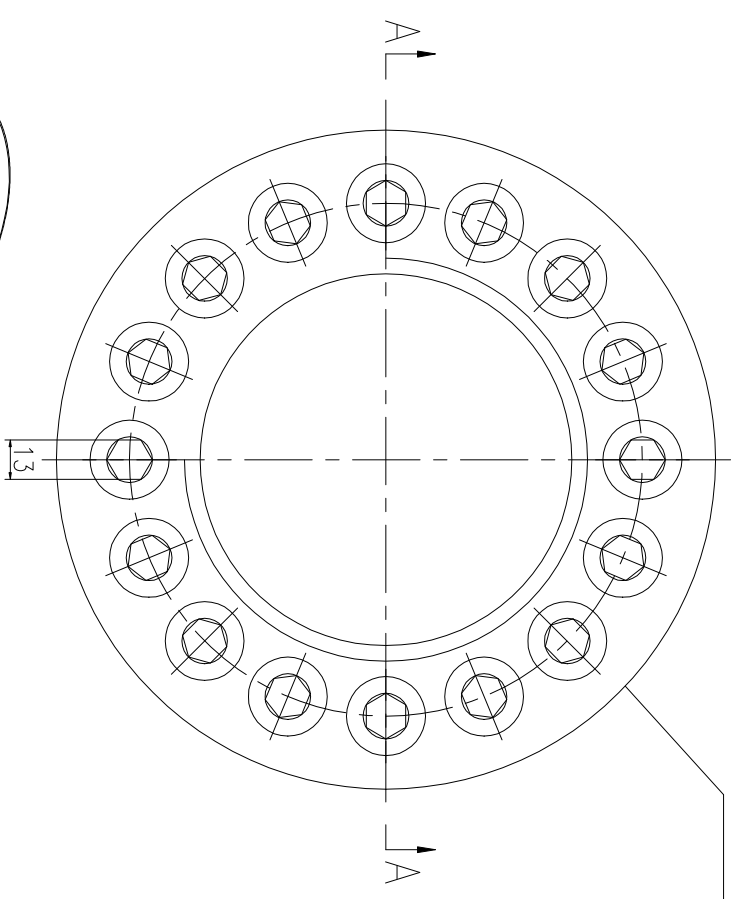


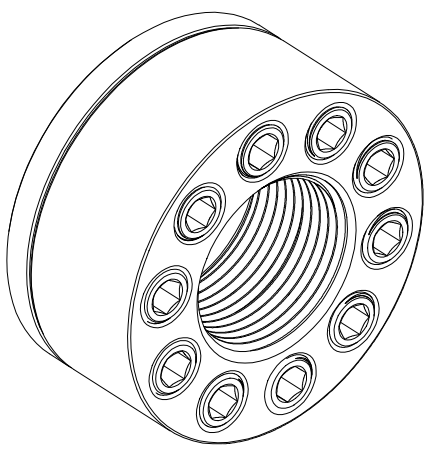
REV	DESCRIPTION	DWG CHECK	APPR BY	APPR DATE

REVISION HISTORY

Logo
 PSN:model
 NO:drawing number
 NOM torque:**
 NOM preload:**
 MAX:max preload



A-A



NOM TORQUE	1550 NM
NOM PRELOAD	2040 KN
MAX PRELOAD CAPACITY	307 KN
LUBRICANT	G-N PLUS
TEMPERATURE RATING	-25 C~250 C

PARTS LIST		PART	DWG NO.	QTY	DESCRIPTION	MATERIAL	WEIGHT(kg)
1	BCHS25.412581	16	Boit 1-12UNF	CNMMo	0.19 / pcs		
2	CHS125681M-1	1	Nut M125X6	CNMMo	9.32		
3	CHS125681M-3	1	Gasket 127X202X10	CNMMo	1.50		

During on-site installation, please adjust the torque in conjunction with the bolt stretching distance. Without our authorization, the drawings shall not be shared with any third party, and we reserve the right to pursue legal liability against those who disclose the drawings to external parties.

DESIGNED:	DATE:	2025.12.01	CHSM-125X6
REVIEWED:	DATE:	2025.12.01	
DRAWN:	DATE:		

上海康普曼传动机械有限公司	+86 021-61301856
KPM Power Transmission (Shanghai) Co.,Ltd	Liang.Guo@kpmdrive.com.cn

DWG NO:	CHS125681M	SHEET:	1:1
WEIGHT:	13.85 kg	STATE:	PRELIMINARY APPROVED