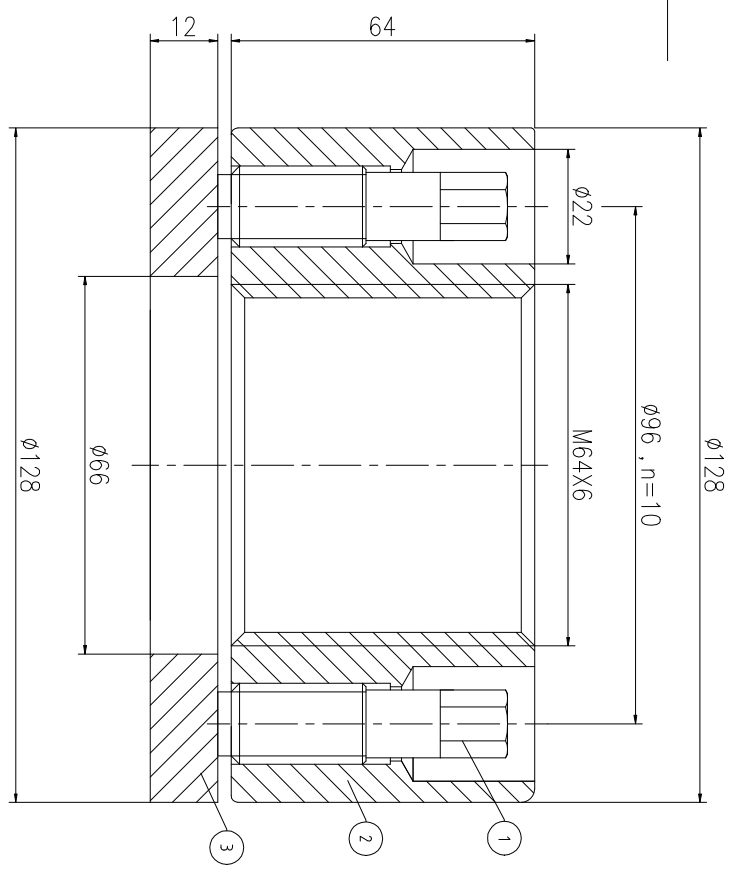
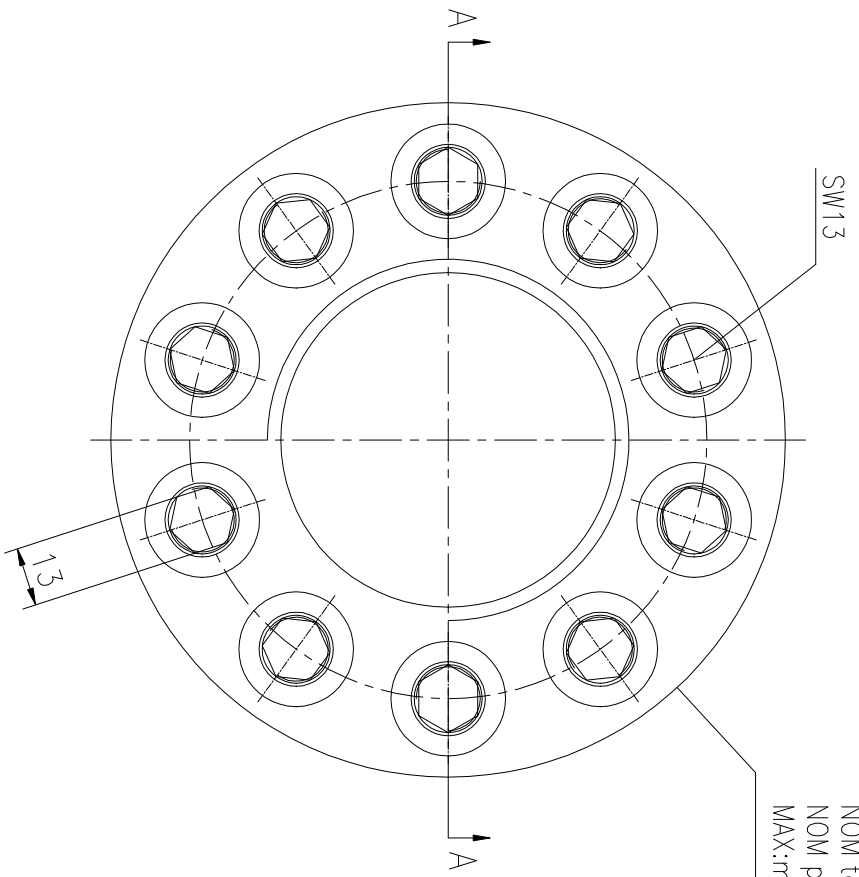
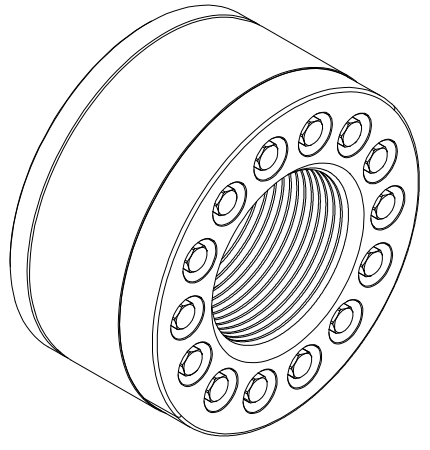


REVISION HISTORY			
REV	DESCRIPTION	DWG CHECK	APPR BY

Logo
 PSN:model
 NO:drawing number
 NOM torque:**
 NOM preload:**
 MAX:max preload



A-A



NOM TORQUE	250 NM
NOM PRELOAD	1140 KN
MAX PRELOAD CAPACITY	1520 KN
LUBRICANT	G-N PLUS
TEMPERATURE RATING	-25 C~250 C

上海康普曼传动机械有限公司		+86 021-61301856	
KPM Power Transmission (Shanghai) Co.,Ltd		Liang.Guo@kpmdrive.com.cn	
DESIGNED: DATE:	2025.12.01	CHHM-64X6	SHEET: 1:1
REVIEWED: DATE:	2025.12.01		
DRAWN: DATE:		DWG NO: CHH64651M	PRELIMINARY APPROVED

PARTS LIST				MATERIAL	WEIGHT(kg)
PART	DWG NO.	QTY	DESCRIPTION	CNMMo	0.10 /pcs
1	BCHH17.516641	10	Bolt 11/16-16UN-64	CNMMo	3.87
2	CHH64651M-1	1	Nut M6X6	CNMMo	0.89
3	CHH64651M-3	1	Gasket 66X128X12	CNMMo	

During on-site installation, please adjust the torque in conjunction with the bolt stretching distance. Without our authorization, the drawings shall not be shared with any third party, and we reserve the right to pursue legal liability against those who disclose the drawings to external parties.