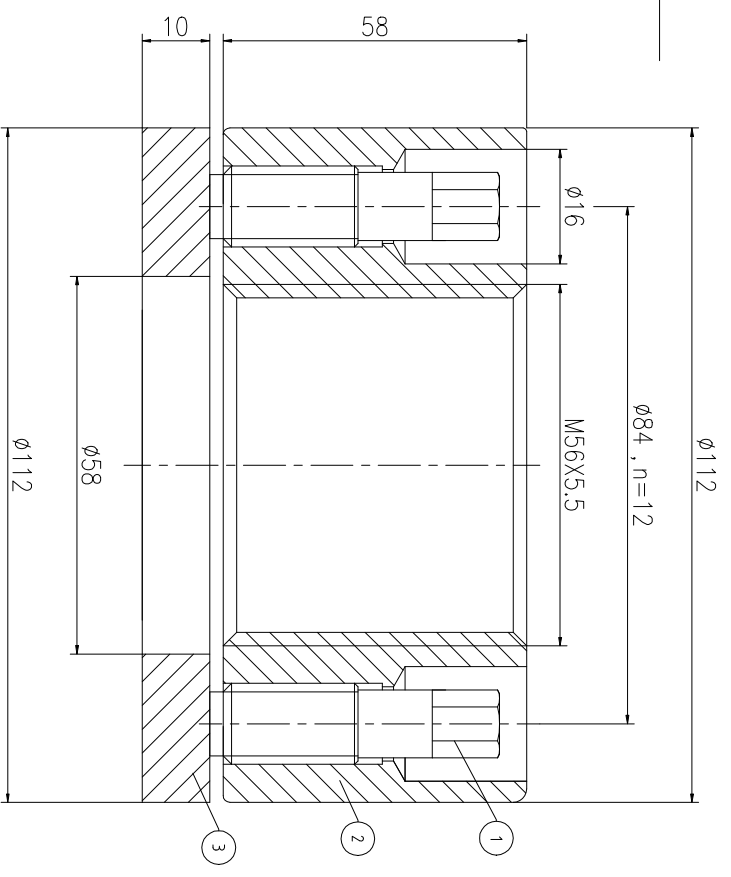
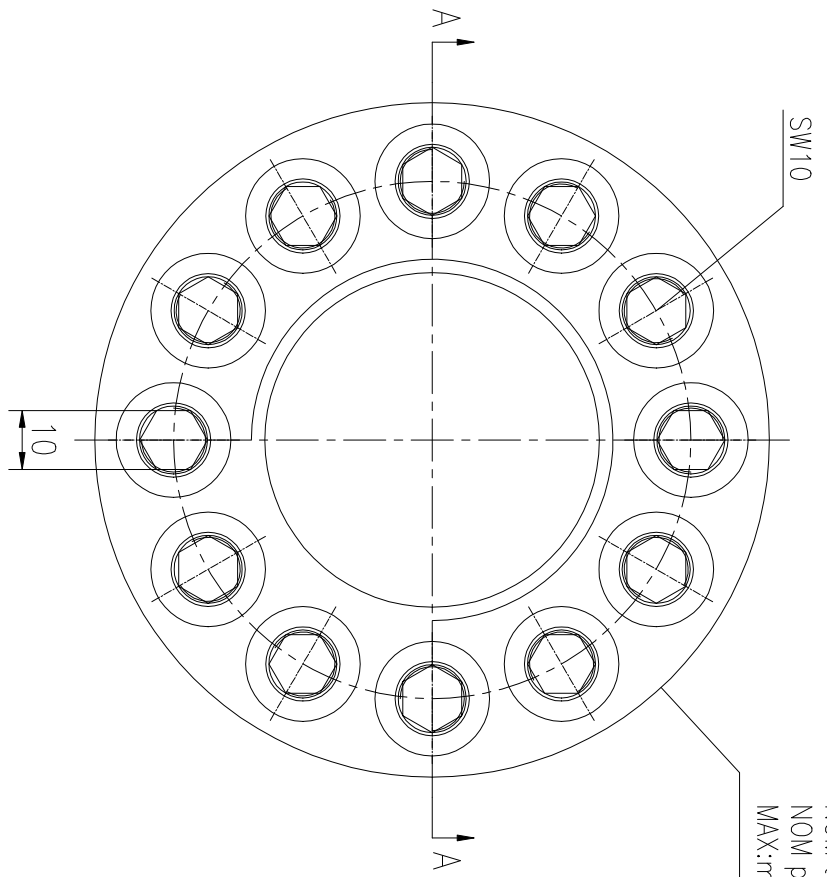
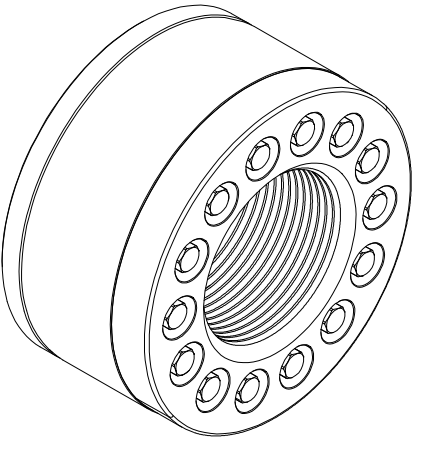


Logo  
 PSN:model  
 NO:drawing number  
 NOM torque:\*\*  
 NOM preload:\*\*  
 MAX:max preload



A-A



NOM TORQUE	107 NM
NOM PRELOAD	810 KN
MAX PRELOAD CAPACITY	1095 KN
LUBRICANT	G-N PLUS
TEMPERATURE RATING	-25 C~250 C

PART	DWG NO.	QTY	DESCRIPTION	MATERIAL	WEIGHT(kg)
1	BCHH12.720581	12	Bolt 1/2-20UNF-58	CNMo	0.05 / pcs
2	CHH565.561M-1	1	Nut M56X5.5	CNMo	2.76
3	CHH565.561M-3	1	Gasket 58X112X10	CNMo	0.57

During on-site installation, please adjust the torque in conjunction with the bolt stretching distance. Without our authorization, the drawings shall not be shared with any third party, and we reserve the right to pursue legal liability against those who disclose the drawings to external parties.

DESIGNED: DATE: 2025.12.01	CHHM-56X5.5
REVIEWED: DATE: 2025.12.01	
DRAWN: DATE:	DWG NO: CHH565.561M
SHEET: 1:1	

PARTS LIST

上海康普曼传动机械有限公司  
 KPM Power Transmission (Shanghai) Co.,Ltd  
 +86 021-61301856  
 Liang.Guo@kpmdrive.com.cn

WEIGHT: 3.93 kg  
 STATE: PRELIMINARY APPROVED