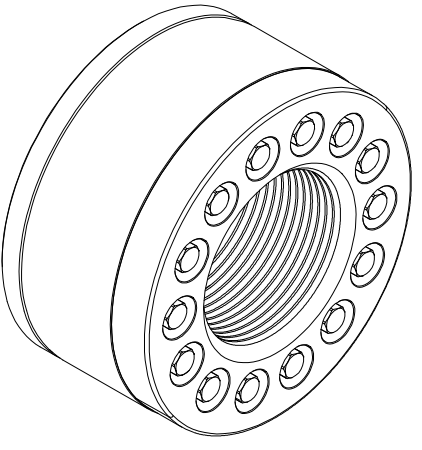
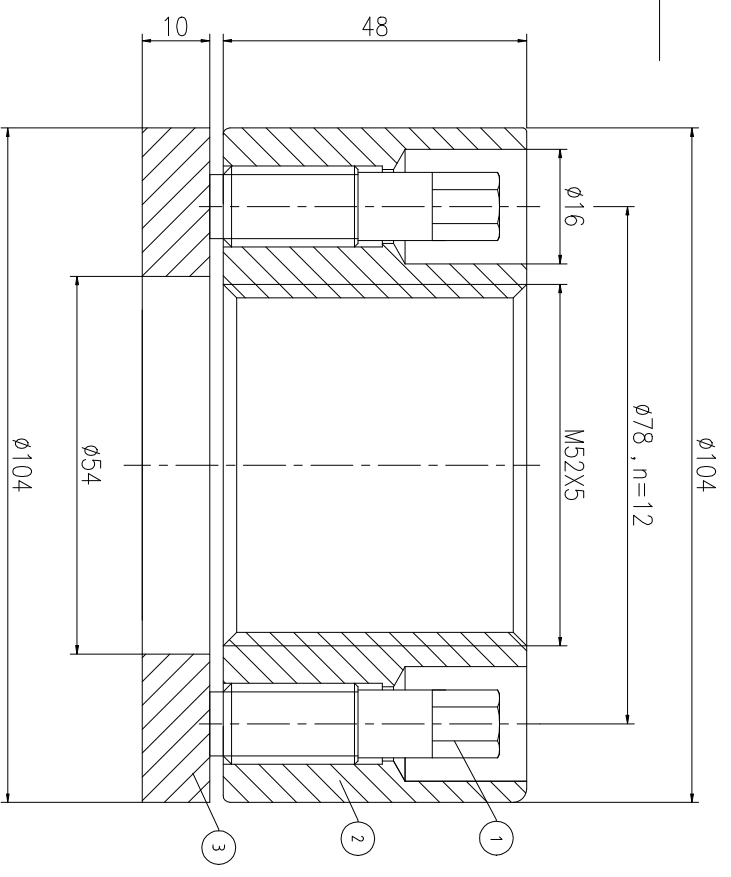
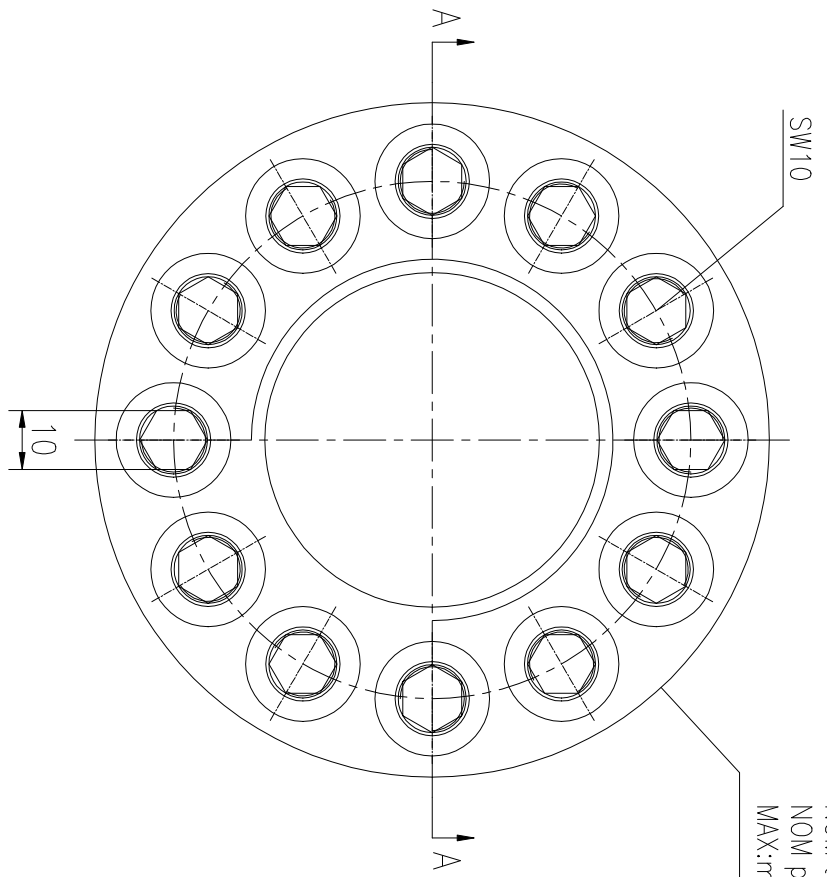


Logo
 PSN:model
 NO:drawing number
 NOM torque:**
 NOM preload:**
 MAX:max preload



NOM TORQUE	107 NM
NOM PRELOAD	810 KN
MAX PRELOAD CAPACITY	1095 KN
LUBRICANT	G-N PLUS
TEMPERATURE RATING	-25 C~250 C

PARTS LIST		MATERIAL	WEIGHT(kg)
1	BCHH12.720451	CNMMo	0.04 /pcs
2	CHH52561M-1	CNMMo	1.93
3	CHH52561M-3	CNMMo	0.49

During on-site installation, please adjust the torque in conjunction with the bolt stretching distance. Without our authorization, the drawings shall not be shared with any third party, and we reserve the right to pursue legal liability against those who disclose the drawings to external parties.

DESIGNED: DATE: 2025.12.01	CHHM-52X5	DWC NO: CHH52561M	SHEET: 1:1
REVIEWED: DATE: 2025.12.01			
DRAWN: DATE:		PRELIMINARY APPROVED	

上海康普曼传动机械有限公司 +86 021-61301856
 KPM Power Transmission (Shanghai) Co.,Ltd Liang.Guo@kpmdrive.com.cn