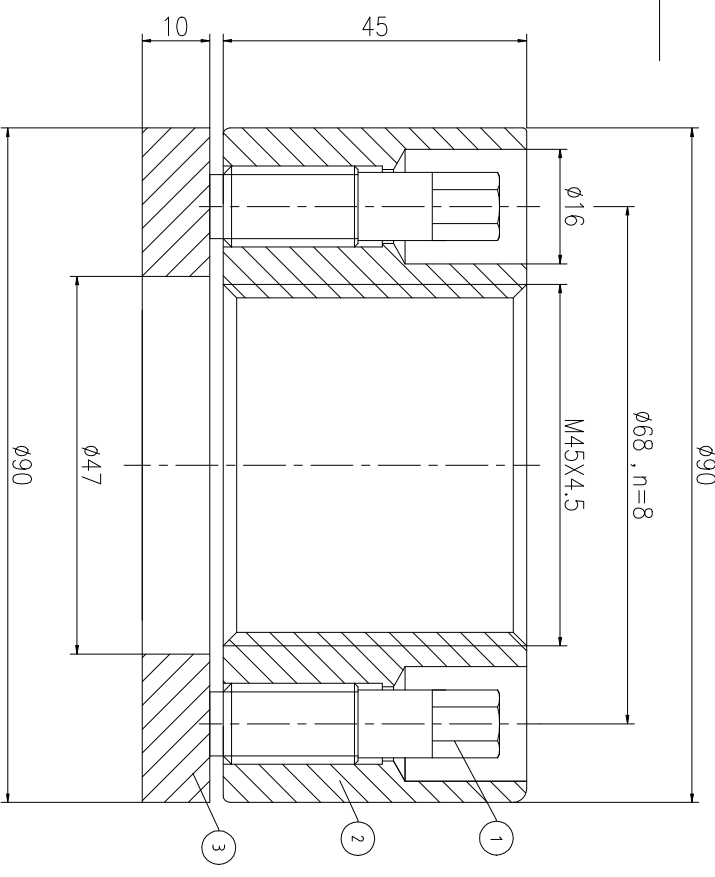
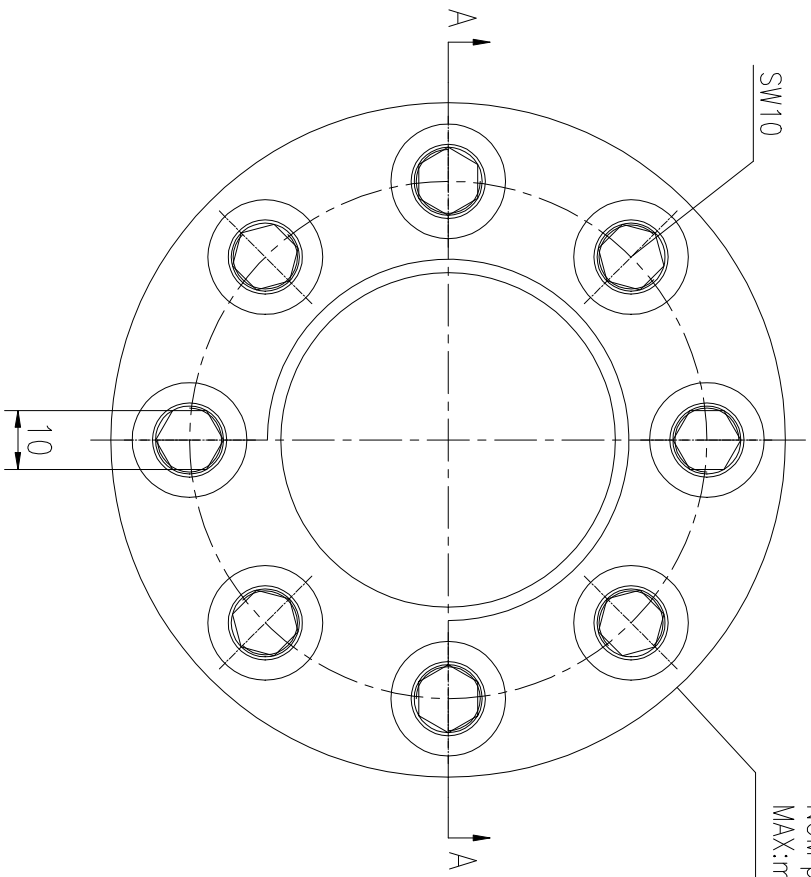
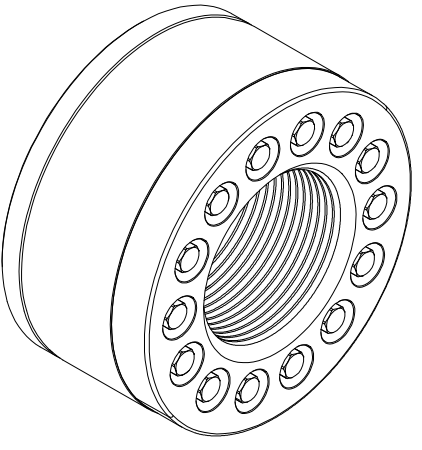


Logo
 PSN:model
 NO:drawing number
 NOM torque:**
 NOM preload:**
 MAX:max preload



A-A



| | |
|----------------------|-------------|
| NOM TORQUE | 101 NM |
| NOM PRELOAD | 510 KN |
| MAX PRELOAD CAPACITY | 670 KN |
| LUBRICANT | G-N PLUS |
| TEMPERATURE RATING | -25 C~250 C |

| | | | |
|----------------------------|-------------|----------------------|------------|
| DESIGNED: DATE: 2025.12.01 | CHHM-45X4.5 | DWG NO: CHH454.541M | SHEET: 1:1 |
| REVIEWED: DATE: 2025.12.01 | | | |
| DRAWN: DATE: | | PRELIMINARY APPROVED | |

上海康普曼传动机械有限公司
 KPM Power Transmission (Shanghai) Co.,Ltd
 +86 021-61301856
 Liang.Guo@kpmdrive.com.cn

| PART | DWG NO. | QTY | DESCRIPTION | MATERIAL | WEIGHT(kg) |
|------|---------------|-----|-------------------|----------|------------|
| 1 | BCHH12.720451 | 8 | Bolt 1/2-20UNF-45 | CNMMo | 0.04 /pcs |
| 2 | CHH454.541M-1 | 1 | Nut M45X4.5 | CNMMo | 1.37 |
| 3 | CHH454.541M-3 | 1 | Washer 47X90X10 | CNMMo | 0.36 |

During on-site installation, please adjust the torque in conjunction with the bolt stretching distance. Without our authorization, the drawings shall not be shared with any third party, and we reserve the right to pursue legal liability against those who disclose the drawings to external parties.