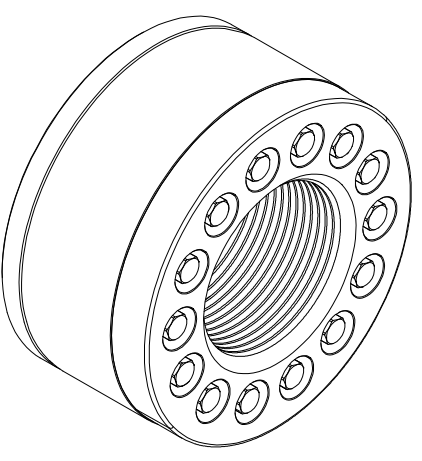
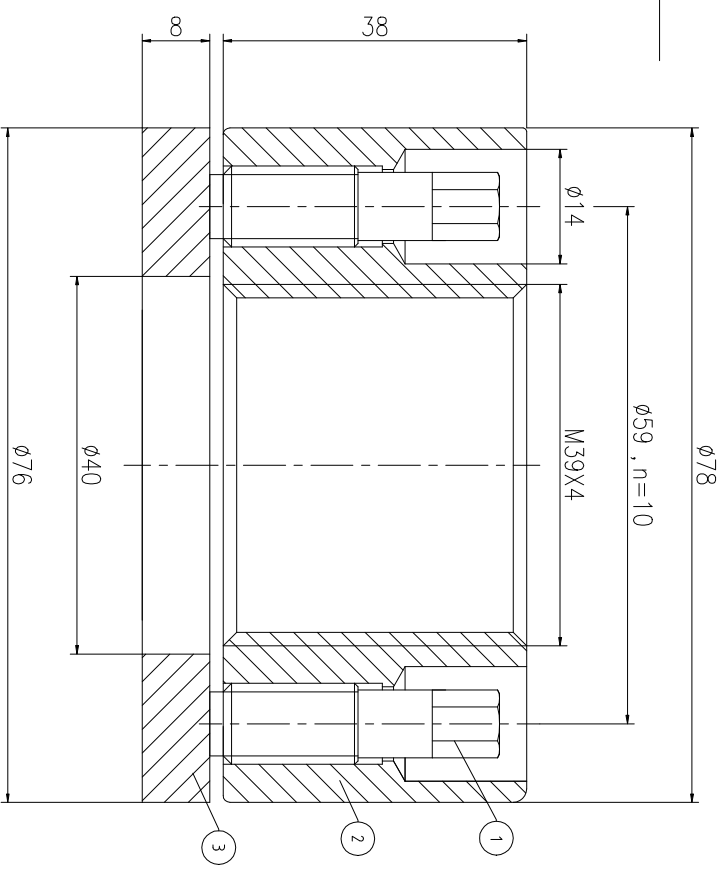
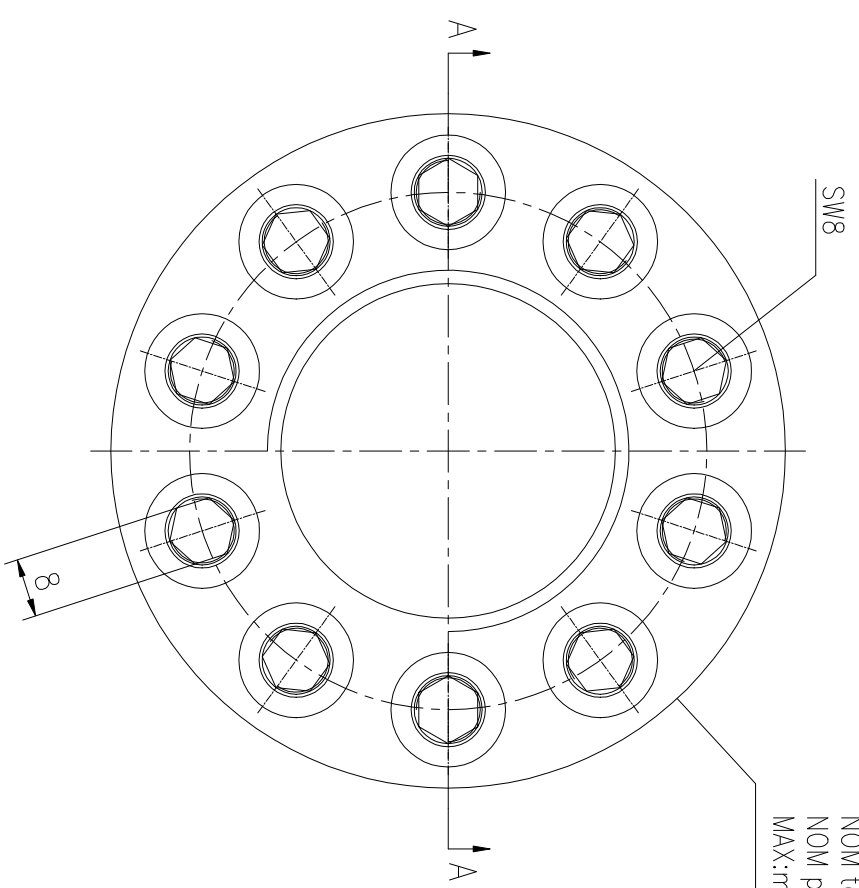


REV	DESCRIPTION	DWG CHECK	APPR BY	APPR DATE

REVISION HISTORY

Logo
 PSN:model
 NO:drawing number
 NOM torque:**
 NOM preload:**
 MAX:max preload

A-A



NOM TORQUE	52 NM
NOM PRELOAD	375 KN
MAX PRELOAD CAPACITY	495 KN
LUBRICANT	G-N PLUS
TEMPERATURE RATING	-25 C~250 C

PARTS LIST		MATERIAL	WEIGHT(kg)		
PART	DWG NO.	QTY	DESCRIPTION	MATERIAL	WEIGHT(kg)
1	BCHH1.120381	10	Bolt 7/16-20UNF-38	CNMMo	0.02 /pcs
2	CHH39451M-1	1	Nut M39X4	CNMMo	0.85
3	CHH39451M-3	1	Gasket 40X76X8	CNMMo	0.21

During on-site installation, please adjust the torque in conjunction with the bolt stretching distance. Without our authorization, the drawings shall not be shared with any third party, and we reserve the right to pursue legal liability against those who disclose the drawings to external parties.

DESIGNED:	DATE:	2025.12.01	CHHM-39X4
REVIEWED:	DATE:	2025.12.01	
DRAWN:	DATE:		DWG NO.: CHH39451M

上海康普曼传动机械有限公司
 KPM Power Transmission (Shanghai) Co.,Ltd
 +86 021-61301856
 Liang.Guo@kpmdrive.com.cn

WEIGHT: 1.27 kg
 STATE: PRELIMINARY APPROVED