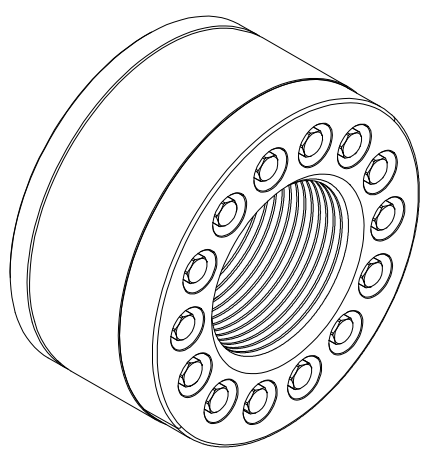
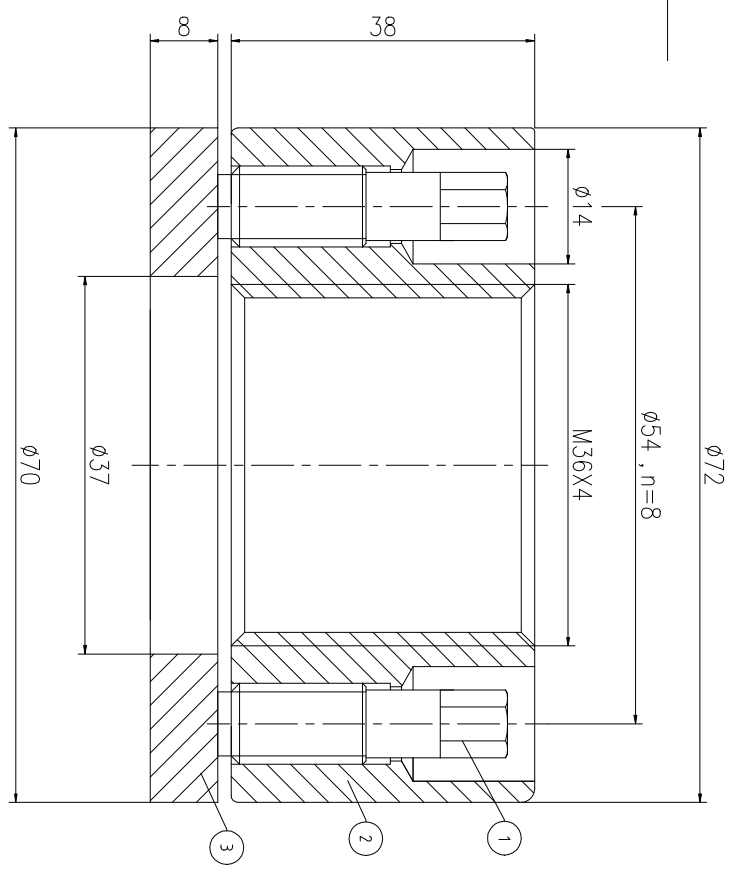
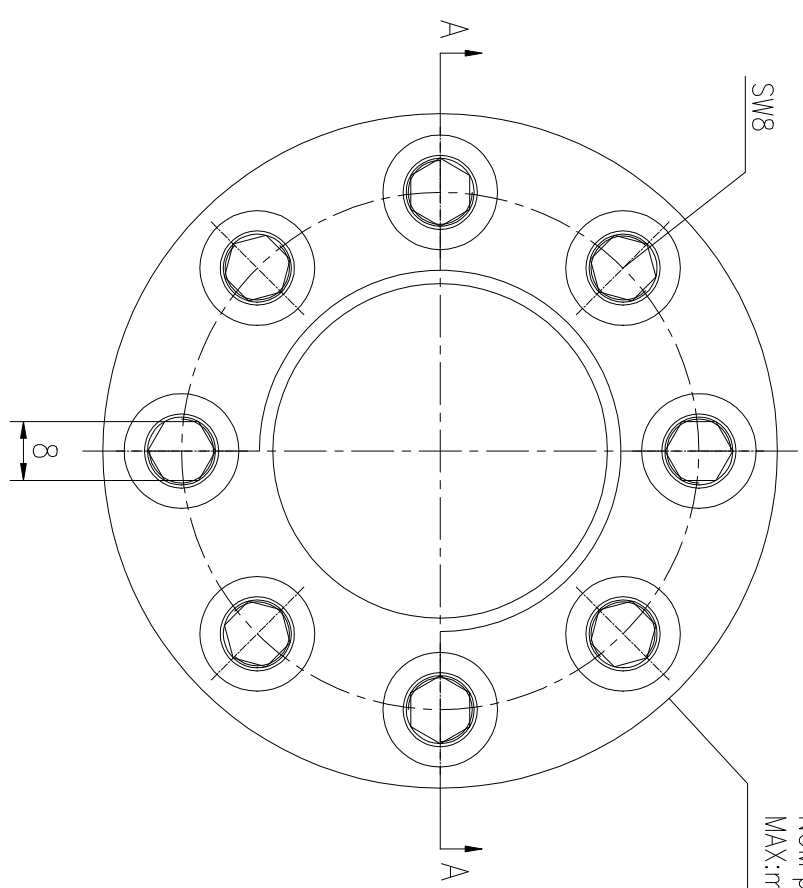


REV	DESCRIPTION	DWG CHECK	APPR BY	APPR DATE

REVISION HISTORY

Logo
 PSN:model
 NO:drawing number
 NOM torque:**
 NOM preload:**
 MAX:max preload

A-A



NOM TORQUE	52 NM
NOM PRELOAD	300 KN
MAX PRELOAD CAPACITY	400 KN
LUBRICANT	G-N PLUS
TEMPERATURE RATING	-25 C~250 C

DESIGNED: DATE: 2025.12.01	CHHM-36X4	DWG NO: CHH36441M	SHEET: 1:1
REVIEWED: DATE: 2025.12.01			
DRAWN: DATE:		PRELIMINARY APPROVED	

PART	DWG NO.	QTY	DESCRIPTION	MATERIAL	WEIGHT(kg)
1	BCHH1.120381	8	Bolt 7/16-20UNF-38	CNMMo	0.02 / pcs
2	CHH36441M-1	1	Nut M36X4	CNMMo	0.73
3	CHH36441M-3	1	Washer 37X70X8	CNMMo	0.17

During on-site installation, please adjust the torque in conjunction with the bolt stretching distance. Without our authorization, the drawings shall not be shared with any third party, and we reserve the right to pursue legal liability against those who disclose the drawings to external parties.

上海康普曼传动机械有限公司
 KPM Power Transmission (Shanghai) Co.,Ltd
 +86 021-61301856
 Liang.Guo@kpmdrive.com.cn

DESIGNED: DATE: 2025.12.01
 REVIEWED: DATE: 2025.12.01
 DWG NO: CHH36441M
 SHEET: 1:1
 WEIGHT: 1.08 kg
 STATE: PRELIMINARY APPROVED