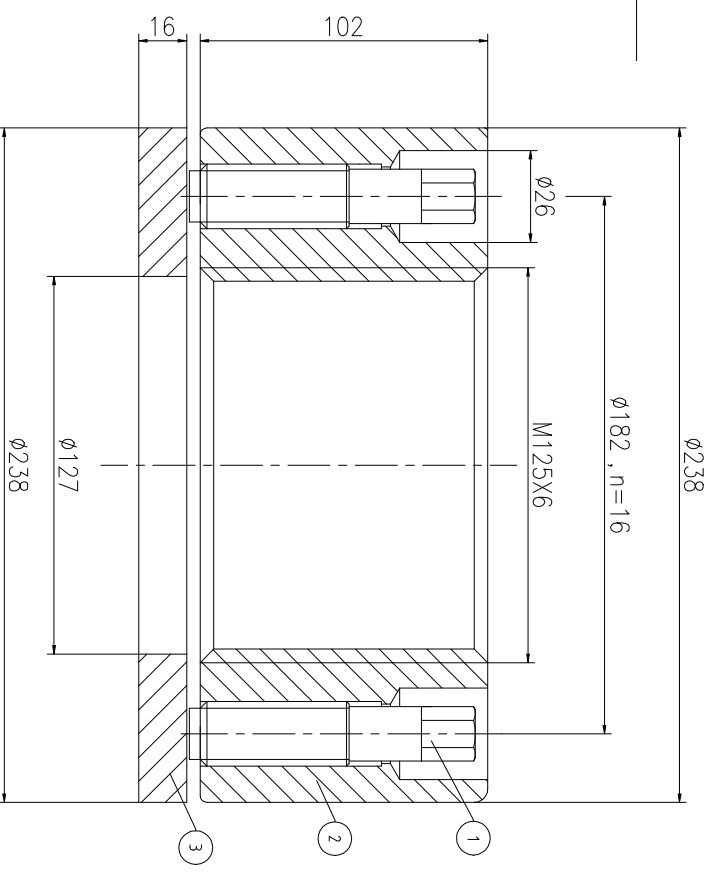
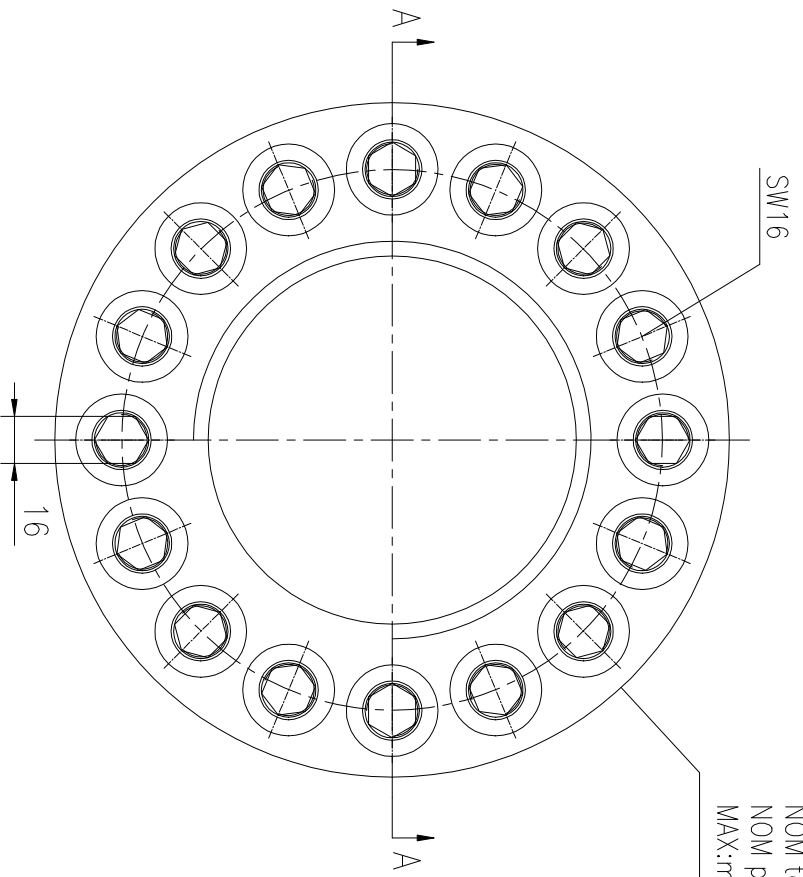


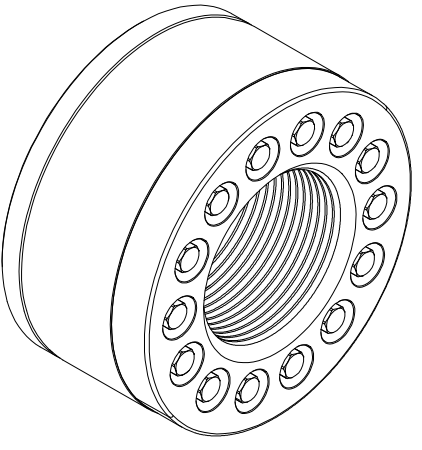
REV	DESCRIPTION	DWG CHECK	APPR BY	APPR DATE

REVISION HISTORY

Logo
 PSN:model
 NO: drawing number
 NOM torque:**
 NOM preload:**
 MAX:max preload



A-A



NOM TORQUE	498 NM
NOM PRELOAD	3070 KN
MAX PRELOAD CAPACITY	4080 KN
LUBRICANT	G-N PLUS
TEMPERATURE RATING	-25 C~250 C

PARTS LIST		PART	DWG NO.	QTY	DESCRIPTION	MATERIAL	WEIGHT(kg)
1	BCHH20.6161011	16	Bolt 13/16-16UN-101	CNMMo	0.22 / pcs		
2	CHH125681M-1	1	Nut M125X6	CNMMo	22.22		
3	CHH125681M-3	1	Gasket 127X238X16	CNMMo	3.99		

During on-site installation, please adjust the torque in conjunction with the bolt stretching distance. Without our authorization, the drawings shall not be shared with any third party, and we reserve the right to pursue legal liability against those who disclose the drawings to external parties.

上海康普曼传动机械有限公司
 KPM Power Transmission (Shanghai) Co.,Ltd
 +86 021-61301856
 Liang.Guo@kpmdrive.com.cn
 DESIGNED: 2025.12.01
 REVIEWED: 2025.12.01
 DRAWN: 2025.12.01
 DWG NO: CHHM-125X6
 SHEET: 1:1
 WEIGHT: 29.78 kg
 STATE: PRELIMINARY APPROVED