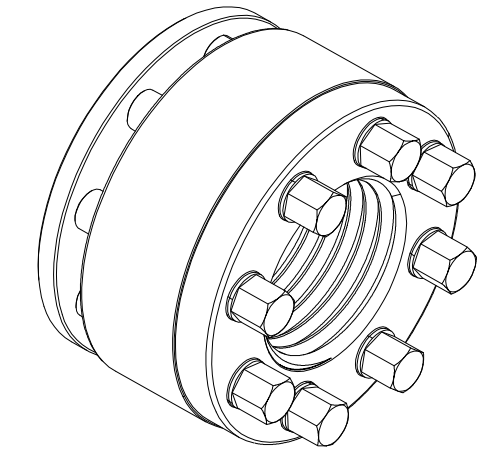
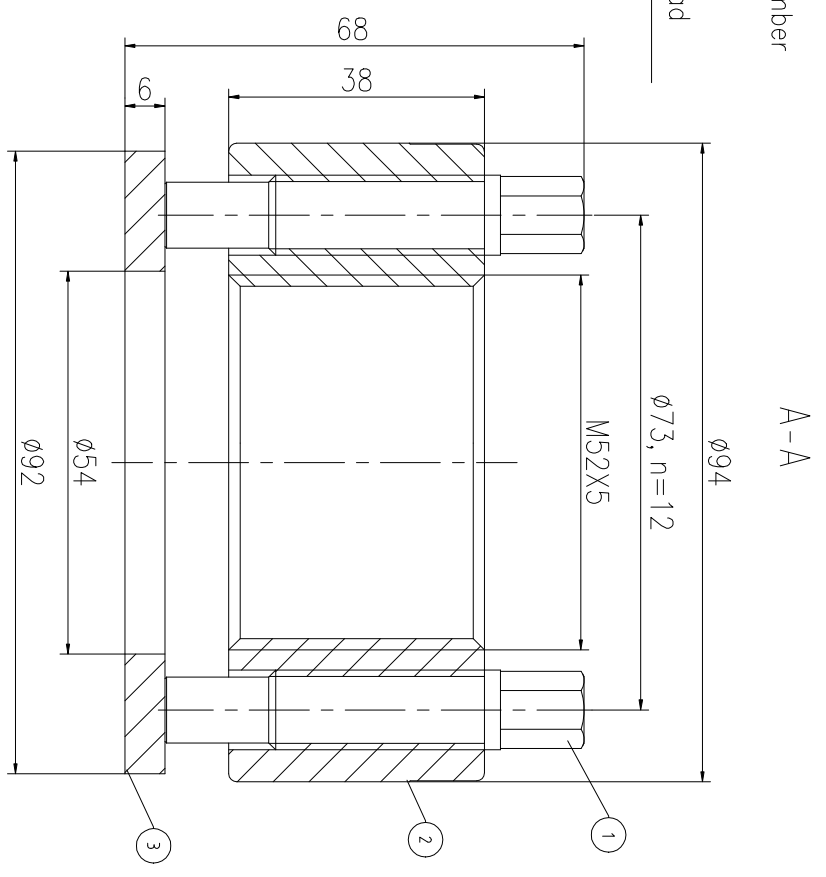
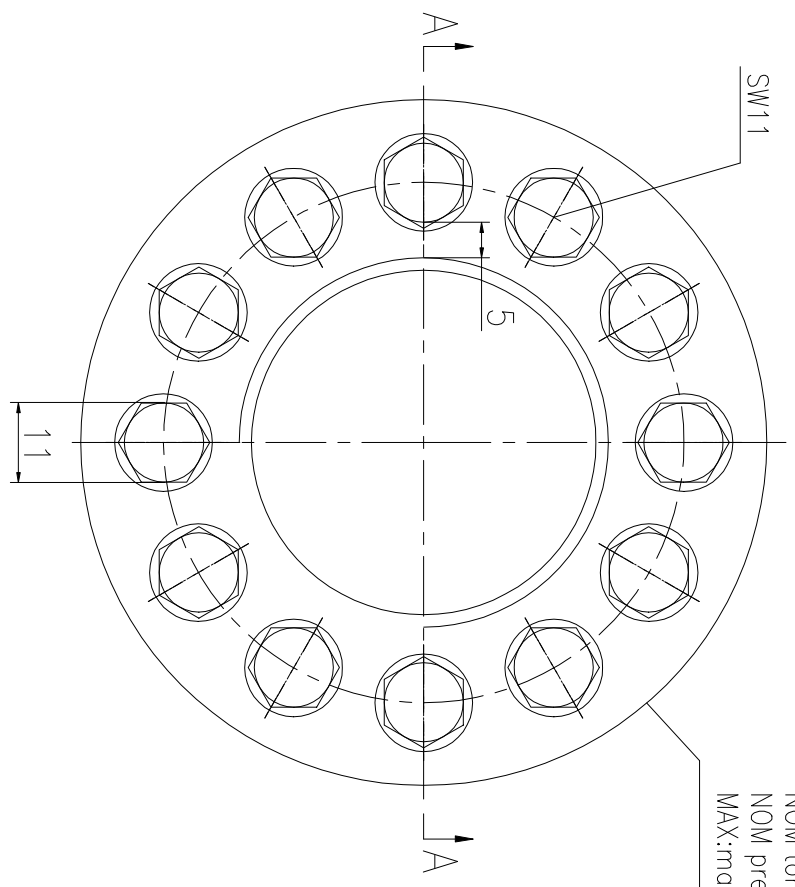


REV	DESCRIPTION	DWG CHECK	APPR BY	APPR DATE

REVISION HISTORY

Logo
 PSN:model
 NO:drawing number
 NOM torque:**
 NOM preload:**
 MAX:max preload



NOM TORQUE	141NM
NOM PRELOAD	1050KN
MAX PRELOAD CAPACITY	1400KN
LUBRICANT	G-N PLUS
TEMPERATURE RATING	-25 C~250 C °

上海康普曼传动机械有限公司		KPM Power Transmission (Shanghai) Co.,Ltd		+86 021-61301856	
DESIGNED:	DATE: 2025.11.06	ASH-52X5		DWG NO:	AS52561H
REVIEWED:	DATE: 2025.11.06	SHEET: 1:1		PRELIMINARY APPROVED	
DRAWN:	DATE:	Liang.Guo@kpmdrive.com.cn		WEIGHT: 2.00kg	
During on-site installation, please adjust the torque in conjunction with the bolt stretching distance. Without our authorization, the drawings shall not be shared with any third party, and we reserve the right to pursue legal liability against those who disclose the drawings to external parties.		STATE: PRELIMINARY APPROVED			

PART	DWG NO.	QTY	DESCRIPTION	MATERIAL	WEIGHT(kg)
1	BAS12.720623	12	Bolt 1/2-20UNF	CNMo	0.06/pos
2	AS52561H-1	1	Nut M52X5	CNMo	1.1
3	AS52561H-3	1	Gasket 54X92X6	CNMo	0.2

PARTS LIST