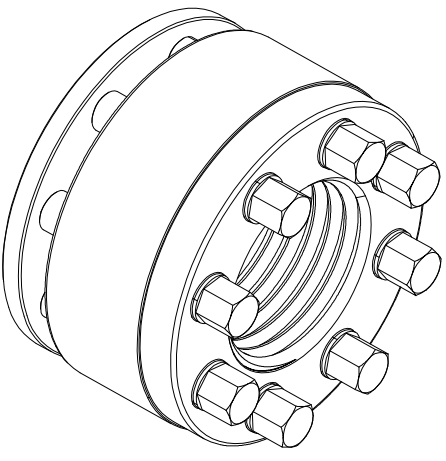
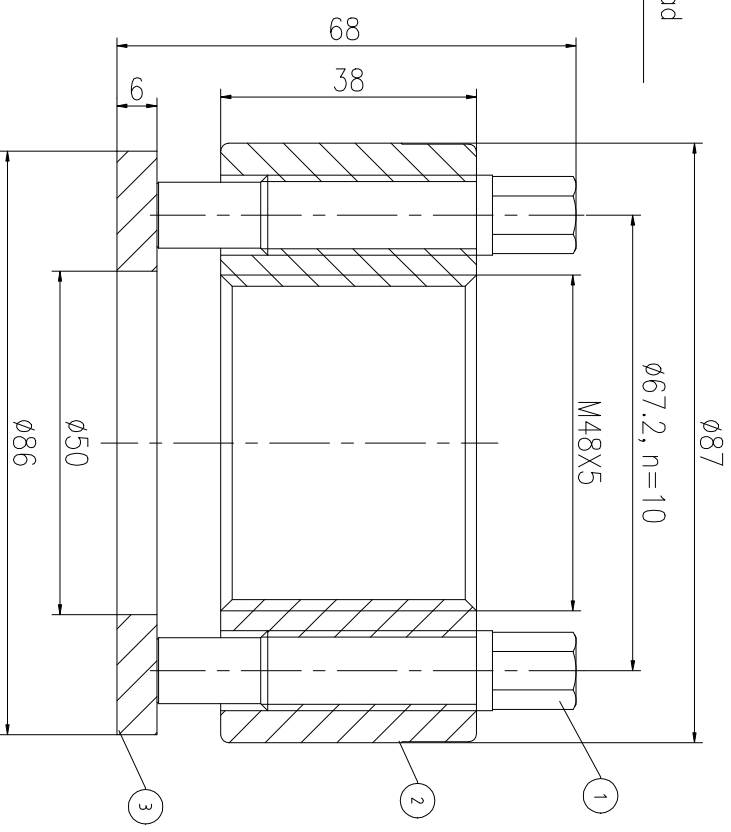
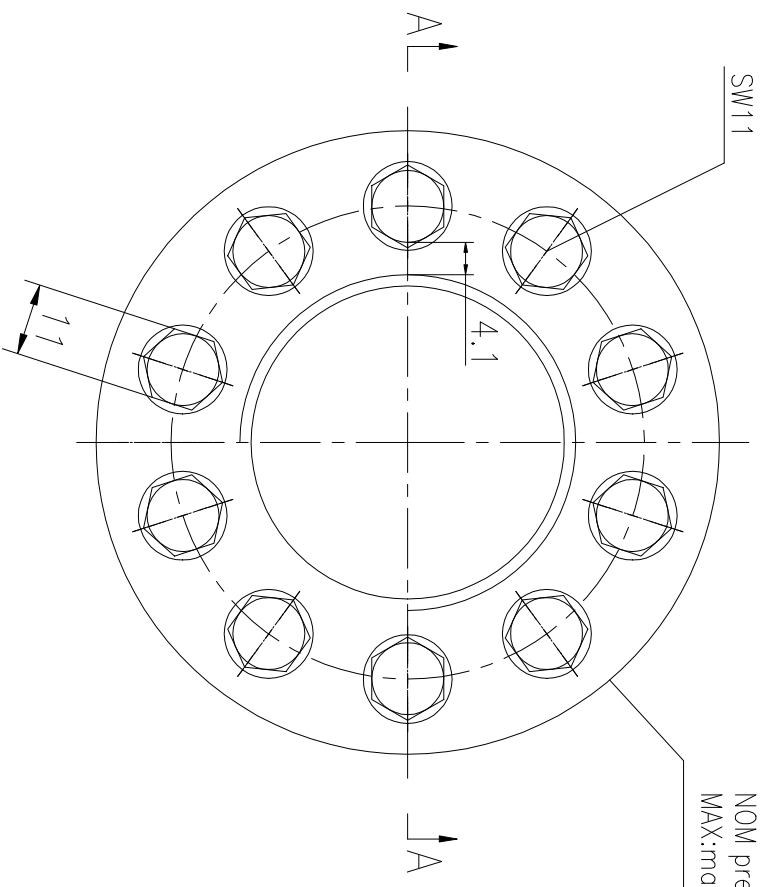


REV	DESCRIPTION	DWG CHECK	APPR BY	APPR DATE

REVISION HISTORY

Logo
 PSN:model
 NO: drawing number
 NOM torque:**
 NOM preload:**
 MAX:max preload

A-A



PARTS LIST

PART	DWG NO.	QTY	DESCRIPTION	MATERIAL	WEIGHT(kg)
1	BAS12.720623	10	Bolt 1/2-20UNF	CNMMo	0.06/pcs
2	AS48551H-1	1	Nut M48X5	CNMMo	0.93
3	AS48551H-3	1	Gasket 50X86X6	CNMMo	0.18

During on-site installation, please adjust the torque in conjunction with the bolt stretching distance. Without our authorization, the drawings shall not be shared with any third party, and we reserve the right to pursue legal liability against those who disclose the drawings to external parties.

NOM TORQUE	141NM	上海康普曼传动机械有限公司	+86 021-61301856
NOM PRELOAD	875KN	KPM Power Transmission (Shanghai) Co.,Ltd	Liang.Guo@kpmdrive.com.cn
MAX PRELOAD CAPACITY	1170KN	DESIGNED: DATE: 2025.11.06	ASH-48X5
LUBRICANT	G-N PLUS	REVIEWED: DATE: 2025.11.06	DWG NO.: AS48551H
TEMPERATURE RATING	-25 C~250 C	DRAWN: DATE:	SHEET: 1:1

WEIGHT: 1.7kg
 STATE: PRELIMINARY APPROVED