

REV	DESCRIPTION	DWG CHECK	APPR BY	APPR DATE
-----	-------------	-----------	---------	-----------

Logo

PSN:model

NO:drawing number

NOM torque:\*\*

NOM preload:\*\*

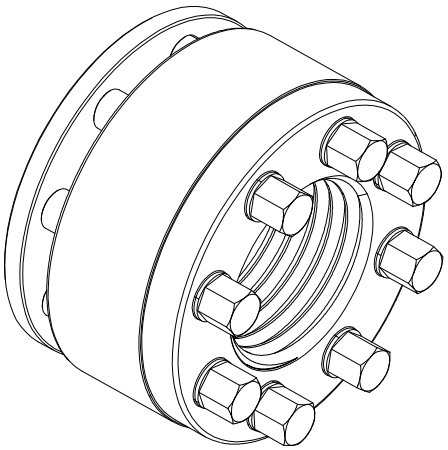
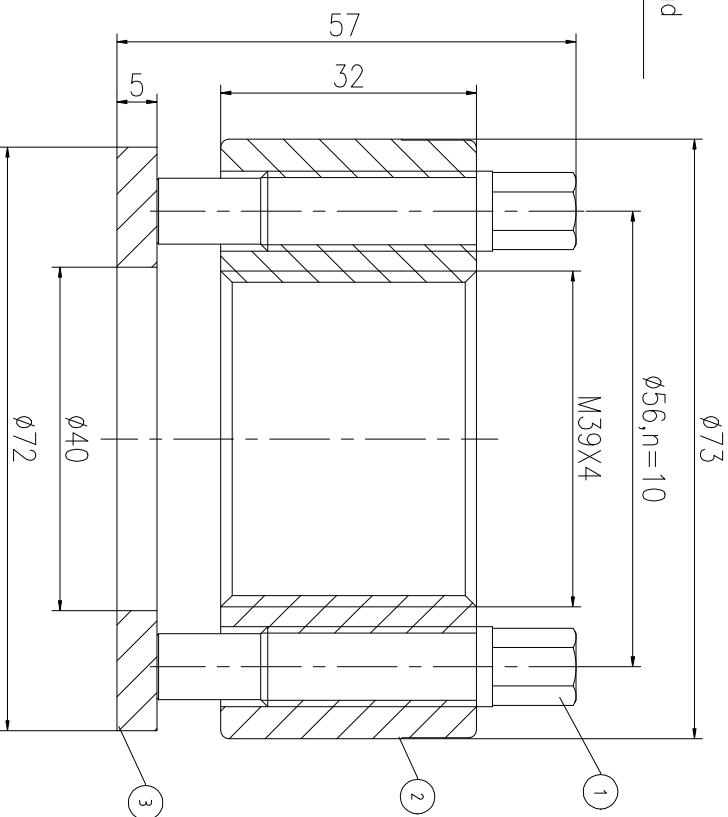
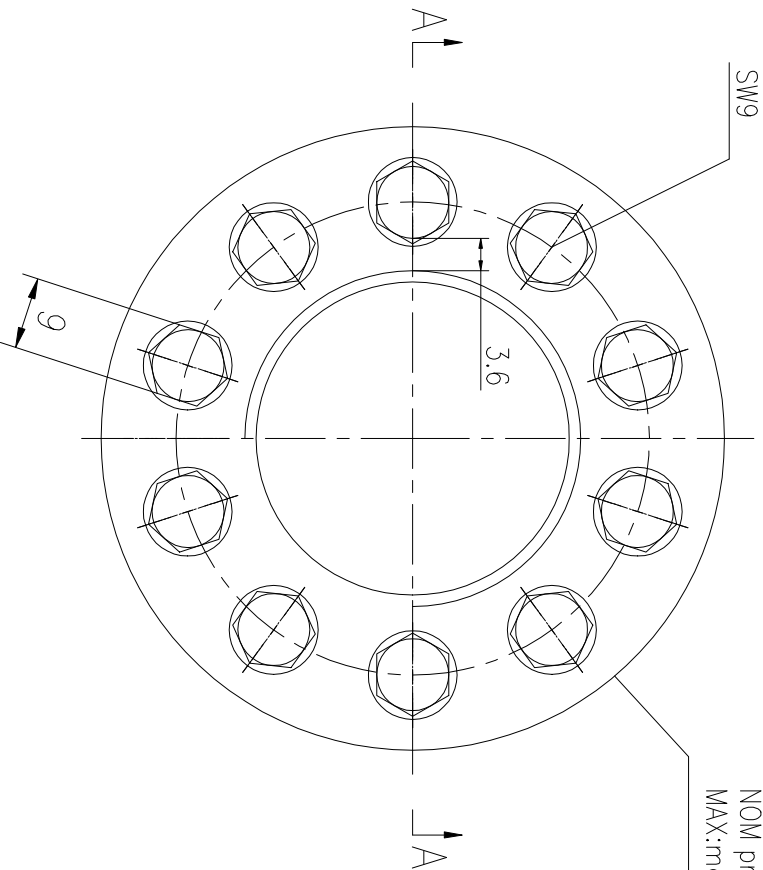
MAX:max preload

A-A

$\Phi$ 73

$\Phi$ 56, n=10

M39X4



PARTS LIST

PART	DWG NO.	QTY	DESCRIPTION	MATERIAL	WEIGHT(kg)
1	BAS11.120523	10	Bolt 7/16-20UNF	CNMMo	0.04/pcs
2	AS39451H-1	1	Nut M39X4	CNMMo	0.56
3	AS39451H-3	1	Gasket 40X72X5	CNMMo	0.11

During on-site installation, please adjust the torque in conjunction with the bolt stretching distance. Without our authorization, the drawings shall not be shared with any third party, and we reserve the right to pursue legal liability against those who disclose the drawings to external parties.

上海康普曼传动机械有限公司

KPM Power Transmission (Shanghai) Co.,Ltd

+86 021-61301856

Liang.Guo@kpmdrive.com.cn

NOM TORQUE	80NM
NOM PRELOAD	570KN
MAX PRELOAD CAPACITY	760KN
LUBRICANT	G-N PLUS
TEMPERATURE RATING	-25 C~250 C

DESIGNED:	DATE: 2025.11.06	ASH-39X4
REVIEWED:	DATE: 2025.11.06	
DRAWN:	DATE:	DWG NO: AS39451H
		SHEET: 1/1
		WEIGHT: 1.07kg
		STATE: PRELIMINARY APPROVED