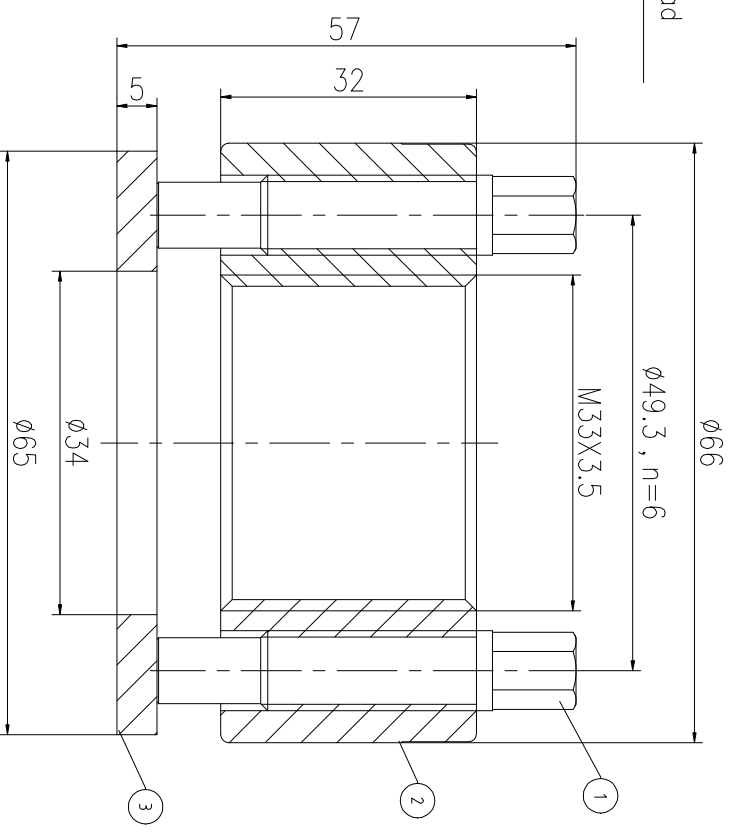
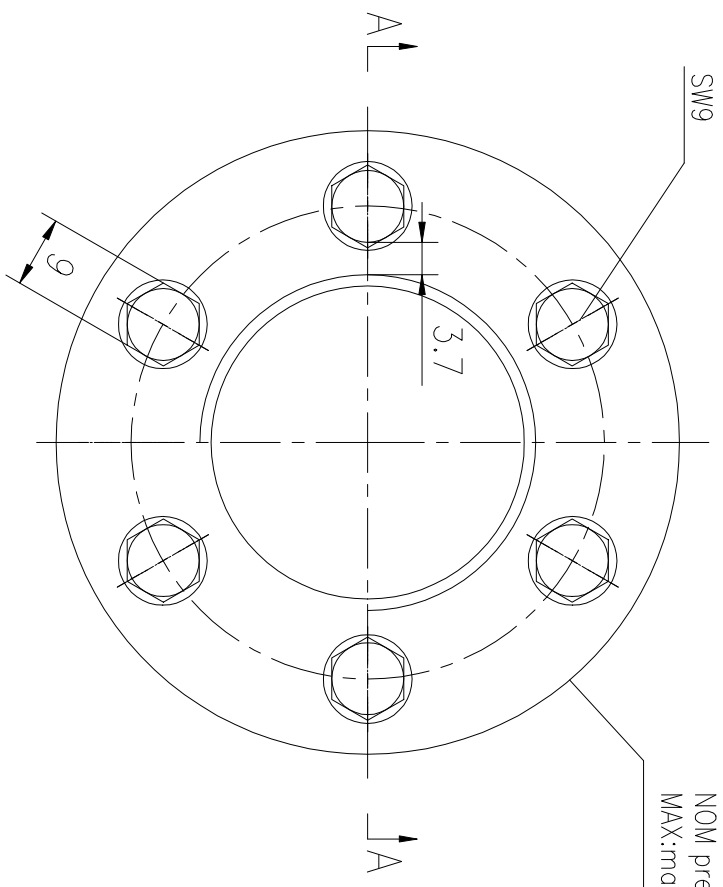


REV	DESCRIPTION	DWG CHECK	APPR BY	APPR DATE

REVISION HISTORY

Logo
 PSN:model
 NO:drawing number
 NOM torque:**
 NOM preload:**
 MAX:max preload

A-A



PARTS LIST

PART	DWG NO.	QTY	DESCRIPTION	MATERIAL	WEIGHT(kg)
1	BAS11.120523	6	Bolt 7/16-20UNF	CNMMo	0.04/pcs
2	AS333.531H-1	1	Nut M33X3.5	CNMMo	0.53
3	AS333.531H-3	1	Gasket 34X59X5	CNMMo	0.09

During on-site installation, please adjust the torque in conjunction with the bolt stretching distance. Without our authorization, the drawings shall not be shared with any third party, and we reserve the right to pursue legal liability against those who disclose the drawings to external parties.

上海康普曼传动机械有限公司 +86 021-61301856
 KPM Power Transmission (Shanghai) Co.,Ltd Liang.Guo@kpmdrive.com.cn

NOM TORQUE	80NM	DESIGNED:	DATE:	2025.11.06	ASH-33X3.5	DWG NO.: AS333.531H	SHEET: 1:1
NOM PRELOAD	345KN	REVIEWED:	DATE:	2025.11.06			
MAX PRELOAD CAPACITY	460KN	DRAWN:	DATE:	2025.11.06	PRELIMINARY APPROVED		
LUBRICANT	G-N PLUS	TEMPERATURE RATING	-25 C~250 C				

