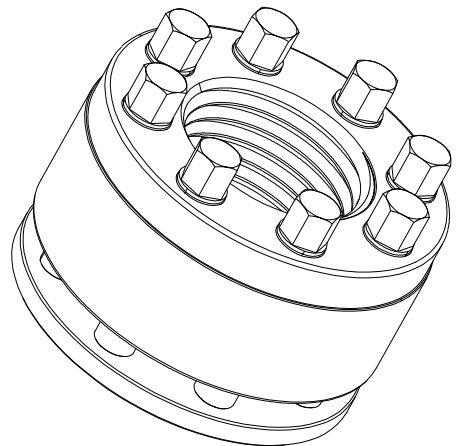
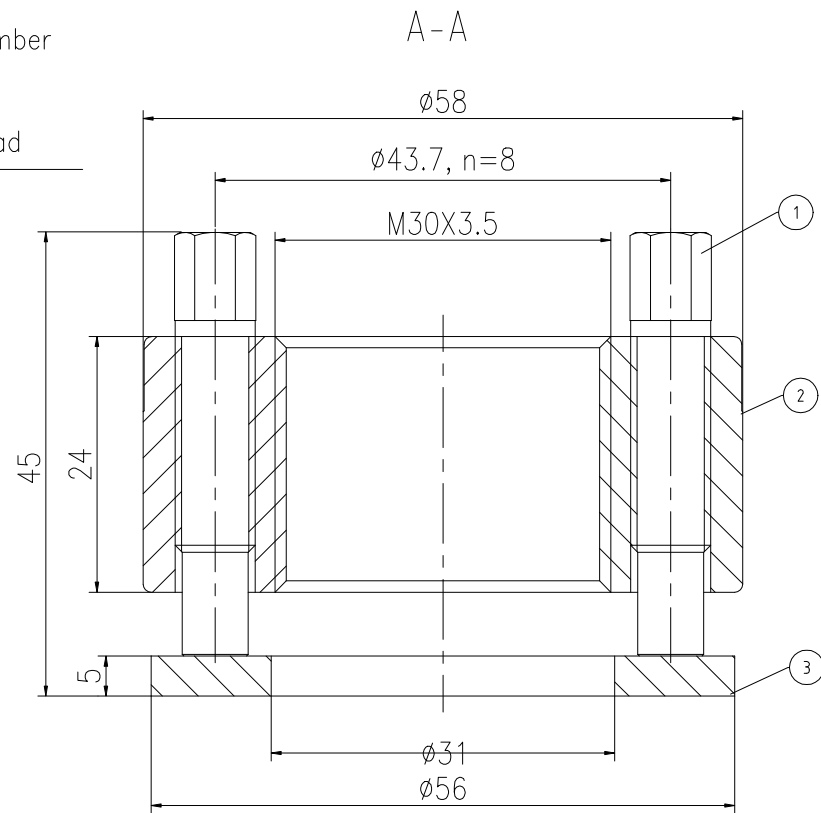
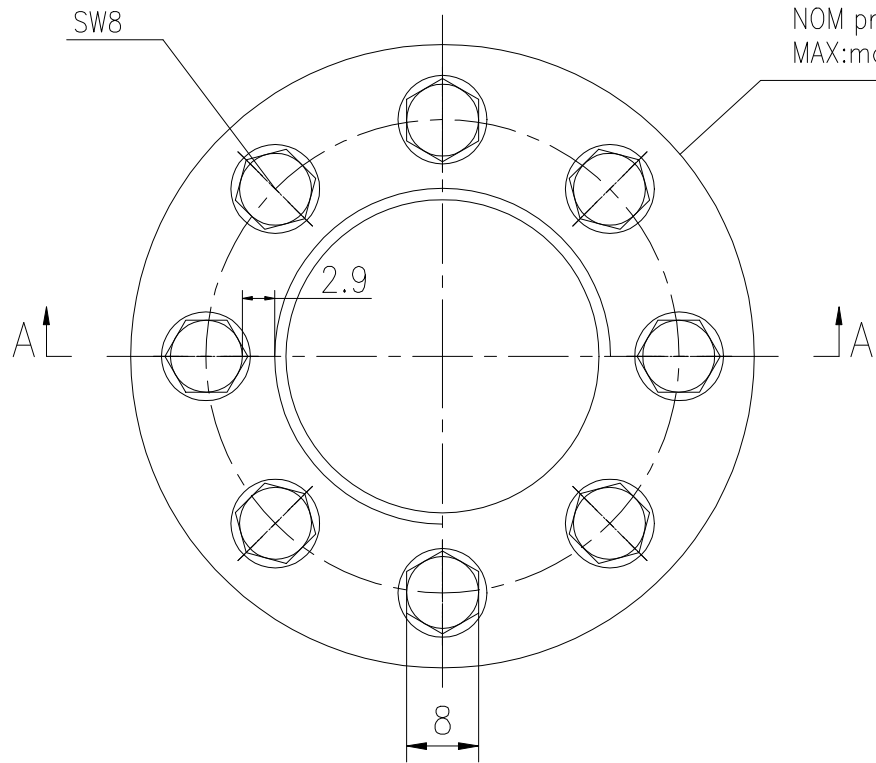


Unmarked tolerances shall be implemented in accordance with ISO 2768-mk.				
1-6 H/1	>6-30 H/2	>30-120 H/3	>120-400 H/5	>400-1000 H/8

REVISION HISTORY		DWG CHECK	APPR BY	APPR DATE
REV	DESCRIPTION			

Logo
 PSN:model
 NO:drawing number
 NOM torque:**
 NOM preload:**
 MAX:max preload



PARTS LIST					
PART	DWG NO.	QTY	DESCRIPTION	MATERIAL	WEIGHT(kg)
1	BAS9.520401	8	Bolt 3/8-20UNF	CrNiMo	0.02/pcs
2	AS303.541H-1	1	Nut M30X3.5	CrNiMo	0.29
3	AS303.541H-3	1	Gasket 31X56X5	CrNiMo	0.07

During on-site installation, please adjust the torque in conjunction with the bolt stretching distance. Without our authorization, the drawings shall not be shared with any third party, and we reserve the right to pursue legal liability against those who disclose the drawings to external parties.

NOM TORQUE	42NM
NOM PRELOAD	214KN
MAX PRELOAD CAPACITY	285KN
LUBRICANT	G-N PLUS
TEMPERATURE RATING	-25 C~250 C

上海康普曼传动机械有限公司		+86 021-61301856	
KPM Power Transmission (Shanghai) Co.,Ltd		Liang.Guo@kpmdrive.com.cn	
DESIGNED: DAYE: 2025.11.06	ASH-30X3.5	WEIGHT: 0.53	
REVIEWED: DAYE: 2025.11.06		STATE:	
DRAWN: DAYE:	DWG NO: AS303.541H	SHEET: 1:1	PRELIMINARY APPROVED

DWG NO: AS303.541H SHEET: 1:1