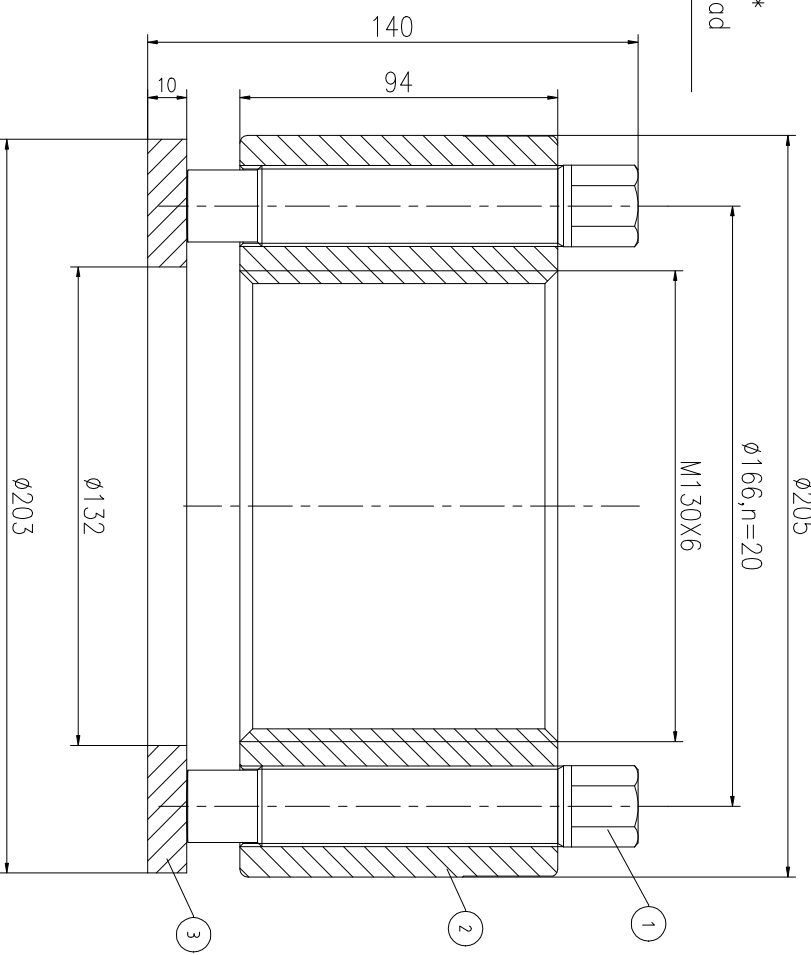
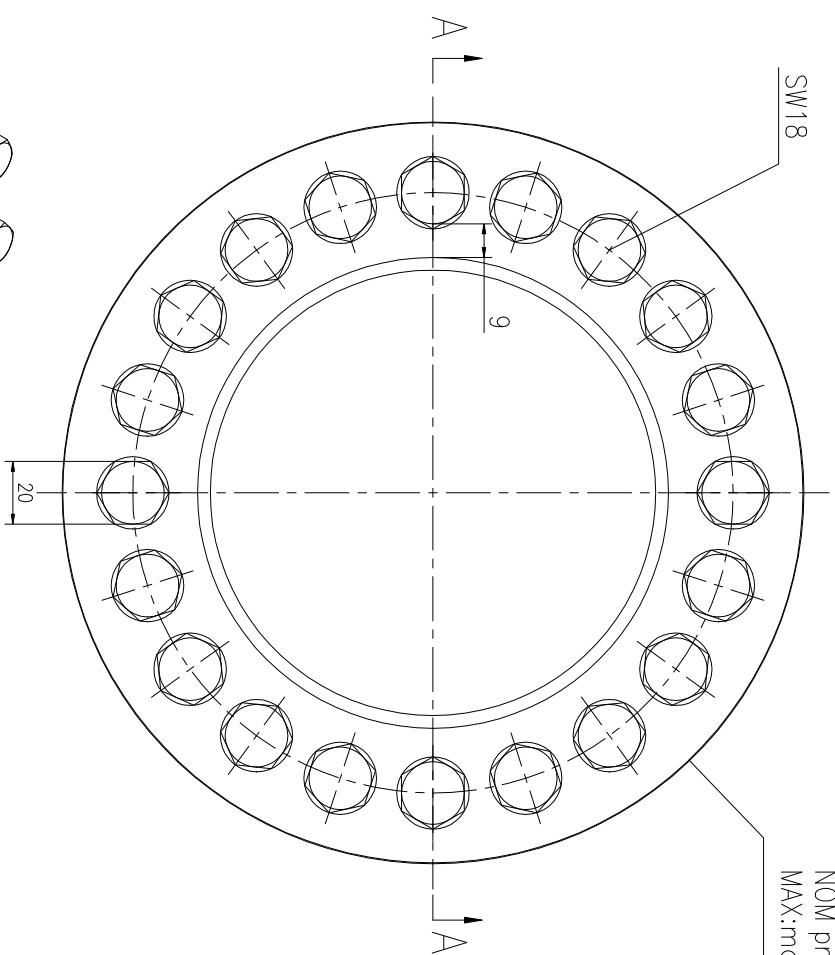


REV	DESCRIPTION	DWG CHECK	APPR BY	APPR DATE

REVISION HISTORY

Logo
 PSN:model
 NO:drawing number
 NOM torque:**
 NOM preload:**
 MAX:max preload



NOM TORQUE	674NM
NOM PRELOAD	5250KN
MAX PRELOAD CAPACITY	7000KN
LUBRICANT	G-N PLUS
TEMPERATURE RATING	-25 C~250 C

PART	DWG NO.	QTY	DESCRIPTION	MATERIAL	WEIGHT(kg)
1	BAS20.6161301	20	Bolt 13/16-16UN-130	CNMMo	0.34/pcs
2	AS1306101H-1	1	Nut M130X6	CNMMo	10.4
3	AS1306101H-3	1	Gasket 132X203X10	CNMMo	1.47

During on-site installation, please adjust the torque in conjunction with the bolt stretching distance. Without our authorization, the drawings shall not be shared with any third party, and we reserve the right to pursue legal liability against those who disclose the drawings to external parties.

上海康普曼传动机械有限公司
 KPM Power Transmission (Shanghai) Co.,Ltd
 +86 021-61301856
 Liang.Guo@kpmdrive.com.cn
 DESIGNED: DATE: 2025.11.07
 REVIEWED: DATE: 2025.11.07
 DRAWN: DATE: 2025.11.07
 DWG NO.: AS1306101H
 SHEET: 1:1
 WEIGHT: 18.7kg
 STATE: PRELIMINARY APPROVED

