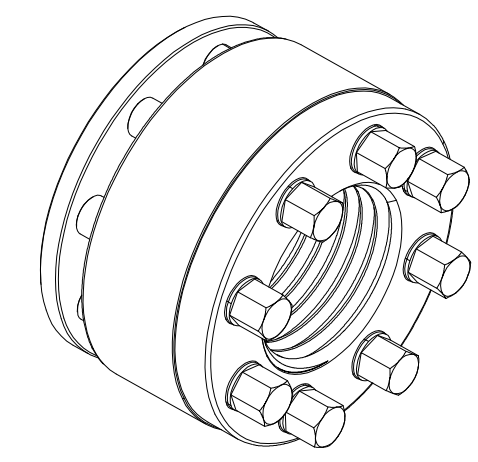
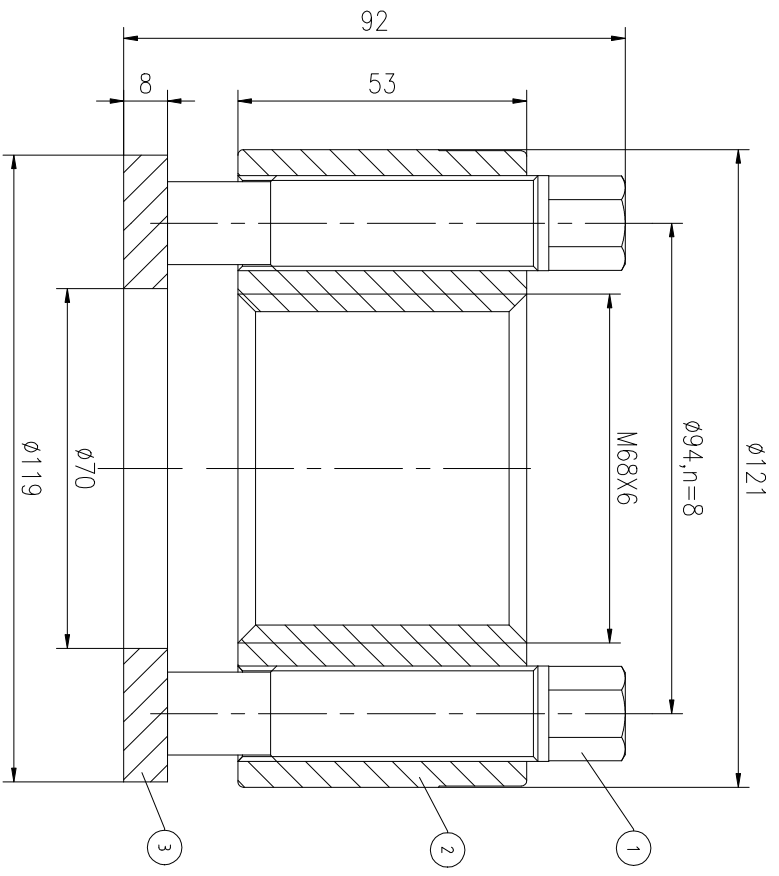
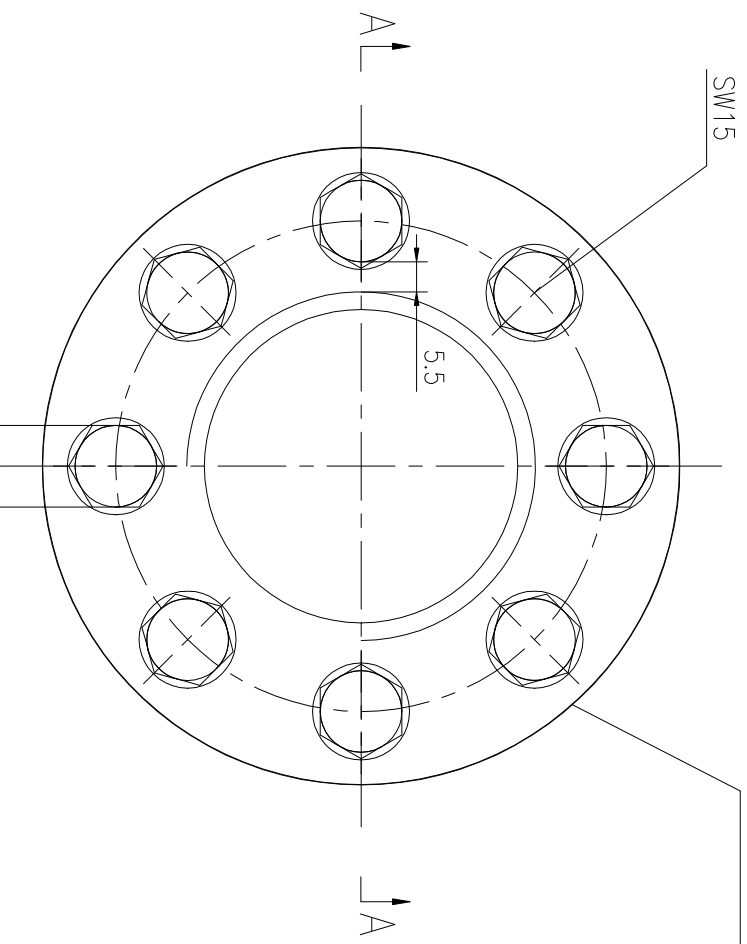


Logo
 PSN:model
 NO:drawing number
 NOM torque:**
 NOM preload:**
 MAX:max preload



NOM TORQUE	352NM
NOM PRELOAD	1270KN
MAX PRELOAD CAPACITY	1690KN
LUBRICANT	G-N PLUS
TEMPERATURE RATING	-25 C ~250 C°

上海康普曼传动机械有限公司		+86 021-61301856	
KPM Power Transmission (Shanghai) Co.,Ltd		Liang.Guo@kpmdrive.com.cn	
DESIGNED:	DATE: 2025.11.03	ASM-68X6	WEIGHT: 4.34kg
REVIEWED:	DATE: 2025.11.03		
DRAWN:	DATE:	DWG NO: AS68641M	SHEET: 1:1
		PRELIMINARY APPROVED	

PARTS LIST				MATERIAL	WEIGHT(kg)
PART	DWG NO.	QTY	DESCRIPTION	CNMMo	0.16/pcs
1	BAS17.516841	8	Bolt 11/16-16UN-84	CNMMo	2.62
2	AS68641M-1	1	Nut M68X6	CNMMo	0.46
3	AS68641M-3	1	Gasket 70X119X8	CNMMo	0.46

During on-site installation, please adjust the torque in conjunction with the bolt stretching distance. Without our authorization, the drawings shall not be shared with any third party, and we reserve the right to pursue legal liability against those who disclose the drawings to external parties.