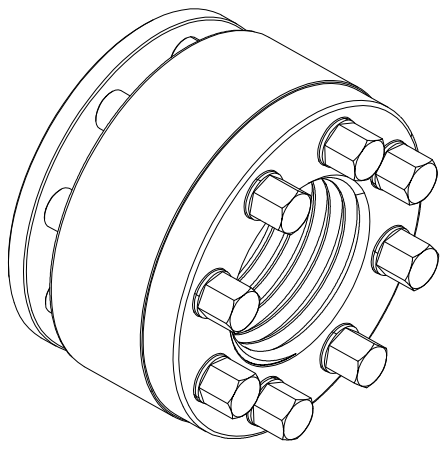
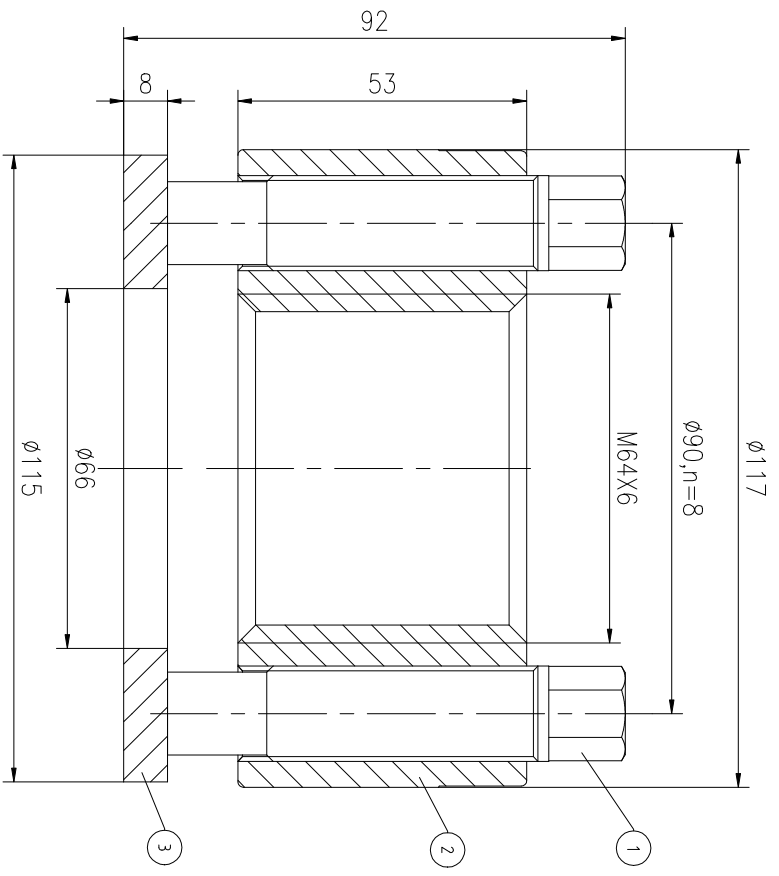
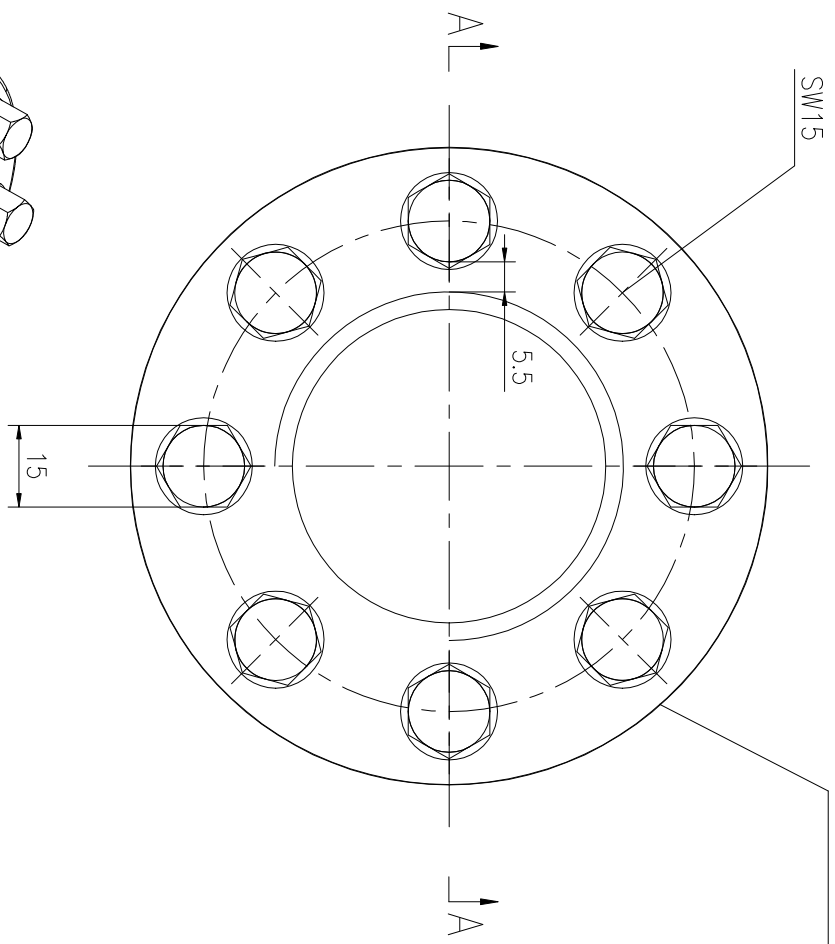


Logo  
 PSN:model  
 NO:drawing number  
 NOM torque:\*\*  
 NOM preload:\*\*  
 MAX:max preload

A-A



PARTS LIST

PART	DWG NO.	QTY	DESCRIPTION	MATERIAL	WEIGHT(kg)
1	BAS17.516841	8	Bolt 11/16-16UN-84	CNMMo	0.16/pcs
2	AS64641M-1	1	Nut M64X6	CNMMo	2.49
3	AS64641M-3	1	Gasket 66X115X8	CNMMo	0.44

During on-site installation, please adjust the torque in conjunction with the bolt stretching distance. Without our authorization, the drawings shall not be shared with any third party, and we reserve the right to pursue legal liability against those who disclose the drawings to external parties.

NOM TORQUE	352NM	上海康普曼传动机械有限公司	+86 021-61301856
NOM PRELOAD	1270KN	KPM Power Transmission (Shanghai) Co.,Ltd	Liang.Guo@kpmdrive.com.cn
MAX PRELOAD CAPACITY	1690KN	DESIGNED: 2025.11.03	ASM-64X6
LUBRICANT	G-N PLUS	REVIEWED: 2025.11.03	DWG NO.: AS64641M
TEMPERATURE RATING	-25 C~250 C	DRAWN: 2025.11.03	SHEET: 1:1